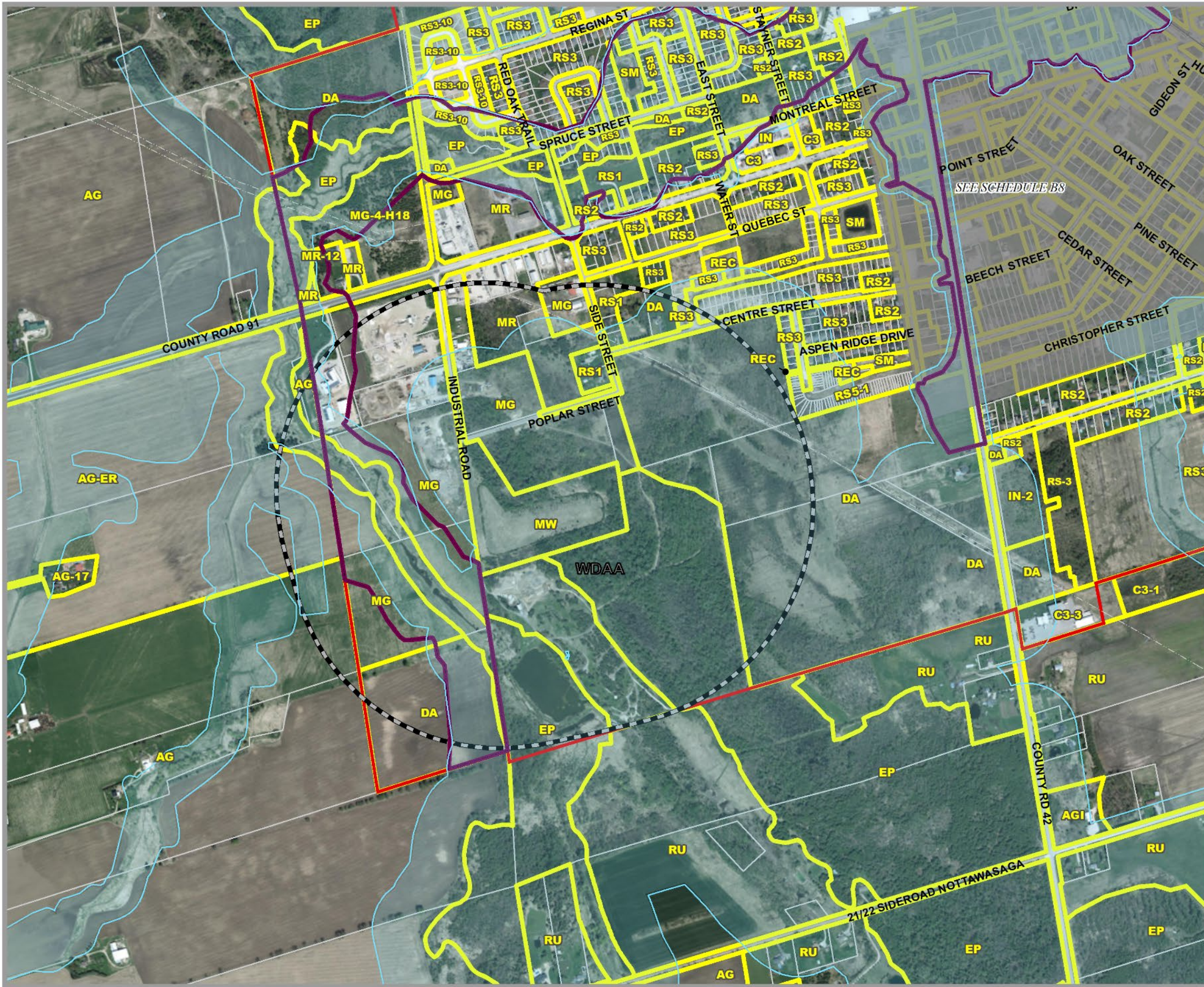
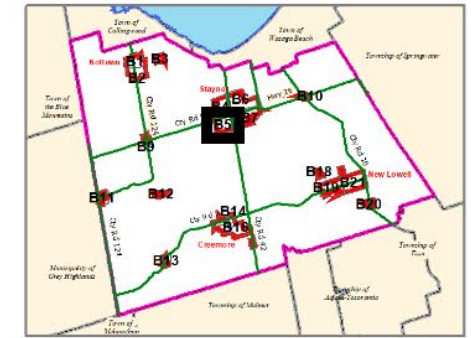


CLEARVIEW TOWNSHIP COMPREHENSIVE ZONING BY-LAW

SCHEDULE B5 SOUTH WEST STAYNER AREA

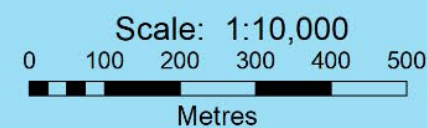
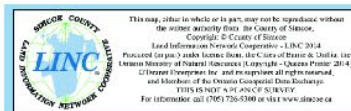


AGRICULTURAL	AG	AGRICULTURAL	MG	INDUSTRIAL GENERAL
AGC	AGRICULTURALLY RELATED COMMERCIAL	MP	INDUSTRIAL PRESTIGE	
AG-EL	AGRICULTURAL LIVESTOCK USE EXCEPTION	MR	INDUSTRIAL RESTRICTED	
AG-ER	AGRICULTURAL RESIDENTIAL USE EXCEPTION	MW	INDUSTRIAL WASTE DISPOSAL	
AGI	AGRICULTURALLY RELATED INDUSTRIAL	NIAGARA ESCARPMENT		
AGK	AGRICULTURAL KENNEL	NEC	NIAGARA ESCARPMENT COMMISSION	
COMMERCIAL		RECREATION		
C1	COMMERCIAL GENERAL	REC	RECREATION LANDS	
C2	COMMERCIAL HIGHWAY	RECT	RECREATIONAL TRAIL	
C3	COMMERCIAL SERVICE	RESIDENTIAL		
C4	COMMERCIAL LARGE FORMAT	RE	RESIDENTIAL ESTATE	
C5	COMMERCIAL NEIGHBOURHOOD	RS	RESIDENTIAL HAMLET	
C6	COMMERCIAL COUNTRY	RS1	RESIDENTIAL LARGE LOT	
CT1	COMMERCIAL TRANSITION 1	RS2	RESIDENTIAL LOW DENSITY	
CT2	COMMERCIAL TRANSITION 2	RS3	RESIDENTIAL MULTIPLE LOW DENSITY	
RECC	COMMERCIAL RECREATION LANDS	RS4	RESIDENTIAL MEDIUM DENSITY	
ENVIRONMENTAL		RS5	RESIDENTIAL MULTIPLE MEDIUM DENSITY	
EP	ENVIRONMENTAL PROTECTION	RS8	RESIDENTIAL HIGH DENSITY	
DEVELOPMENT AREA		RSBB	SETTLEMENT AREA B&B	
DA	DEVELOPMENT AREA	RURAL		
INSTITUTIONAL		RU	RURAL	
IN	INSTITUTIONAL	RUK	RURAL KENNEL	
INR1	INSTITUTIONAL RESIDENTIAL 1			
INR2	INSTITUTIONAL RESIDENTIAL 2			
INDUSTRIAL				
MA	INDUSTRIAL AIRPORT			

- Settlement Area Boundary
- Commercial Transition 1 Area
- FP Hazard Land Area
- FPSP Hazard Land Special Policy
- MARA Mineral Aggregate Resource Area
- WDAA Waste Disposal Assessment Area
- WHPA Well Head Protection Area
- Subject to Appeal Before OMB
- Niagara Escarpment Boundary
- Zone Boundary
- Parcel Boundary
- Utility Line
- Railway
- Abandoned Railway

By-Law 06-54
As Approved by Council, October 23, 2006

Fran Sainsbury
Fran Sainsbury, Mayor
Robert Campbell
Robert Campbell, Clerk



Note: All the elements in the legend may not appear on the map.
SCHEDULE B5 SOUTH WEST STAYNER.PDF