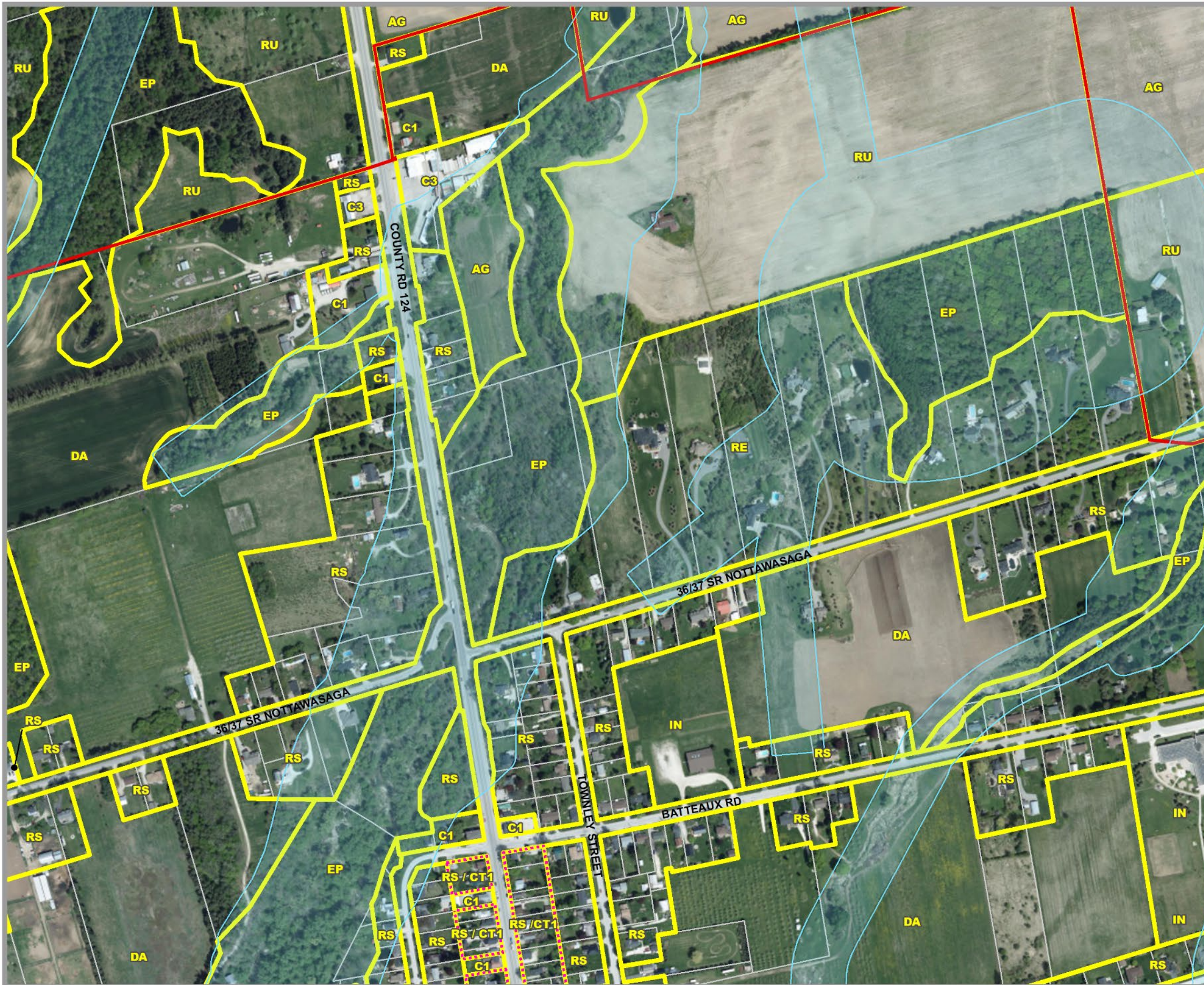
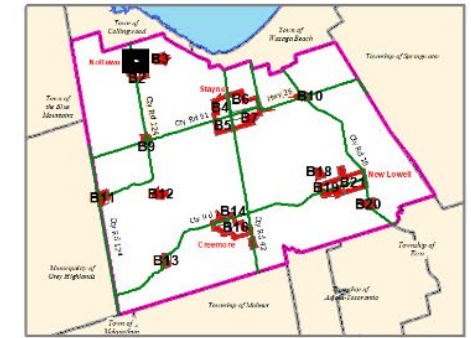


CLEARVIEW TOWNSHIP COMPREHENSIVE ZONING BY-LAW

SCHEDULE B1 NORTH NOTTAWA AREA



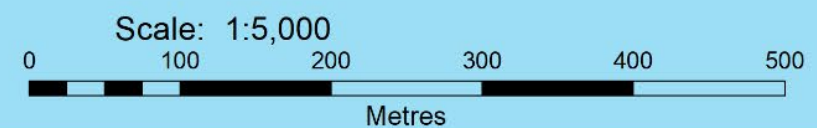
AGRICULTURAL	AG AGRICULTURAL	AGC AGRICULTURALLY RELATED COMMERCIAL	AG-EL AGRICULTURAL LIVESTOCK USE EXCEPTION	AG-ER AGRICULTURAL RESIDENTIAL USE EXCEPTION	AGI AGRICULTURALLY RELATED INDUSTRIAL	AGK AGRICULTURAL KENNEL	MG INDUSTRIAL GENERAL	MP INDUSTRIAL PRESTIGE	MR INDUSTRIAL RESTRICTED	MW INDUSTRIAL WASTE DISPOSAL
COMMERCIAL	C1 COMMERCIAL GENERAL	C2 COMMERCIAL HIGHWAY	C3 COMMERCIAL SERVICE	C4 COMMERCIAL LARGE FORMAT	C5 COMMERCIAL NEIGHBOURHOOD	C6 COMMERCIAL COUNTRY	CT1 COMMERCIAL TRANSITION 1	CT2 COMMERCIAL TRANSITION 2	RECC COMMERCIAL RECREATION LANDS	NIAGARA ESCARPMENT
ENVIRONMENTAL	EP ENVIRONMENTAL PROTECTION	DEVELOPMENT AREA	DA DEVELOPMENT AREA	INSTITUTIONAL	IN INSTITUTIONAL	INR1 INSTITUTIONAL RESIDENTIAL 1	INR2 INSTITUTIONAL RESIDENTIAL 2	INDUSTRIAL	MA INDUSTRIAL AIRPORT	NEC NIAGARA ESCARPMENT COMMISSION
RECREATION	REC RECREATION LANDS	RECT RECREATIONAL TRAIL	RESIDENTIAL	RE RESIDENTIAL ESTATE	RS RESIDENTIAL HAMLET	RS1 RESIDENTIAL LARGE LOT	RS2 RESIDENTIAL LOW DENSITY	RS3 RESIDENTIAL MULTIPLE LOW DENSITY	RS4 RESIDENTIAL MEDIUM DENSITY	RS5 RESIDENTIAL MULTIPLE MEDIUM DENSITY
RURAL	RU RURAL	RUK RURAL KENNEL	RS6 RESIDENTIAL HIGH DENSITY	RSBB SETTLEMENT AREA B&B						

Settlement Area Boundary	Subject to Appeal Before OMB
Commercial Transition 1 Area	Niagara Escarpment Boundary
FP Hazard Land Area	Zone Boundary
FPSP Hazard Land Special Policy	Parcel Boundary
MARA Mineral Aggregate Resource Area	Utility Line
WDA Waste Disposal Assessment Area	Railway
WHPA Well Head Protection Area	Abandoned Railway

By-Law 06-54
As Approved by Council, October 23, 2006

Fran Sainsbury
Fran Sainsbury, Mayor
Robert Campbell
Robert Campbell, Clerk

This map, either in whole or in part, may not be reproduced without the written authority of the County of Simcoe. Copyright © County of Simcoe. Land Information Systems Corporation - LINC 2014. Produced for you by a local license holder, the County of Simcoe & Staff, Inc. pursuant to a license agreement with the County of Simcoe. All rights reserved. For information call: (705) 726-0300 or visit www.linc.ca



Note: All the elements in the legend may not appear on the map.
SCHEDULE B1 NORTH NOTTAWA PDF