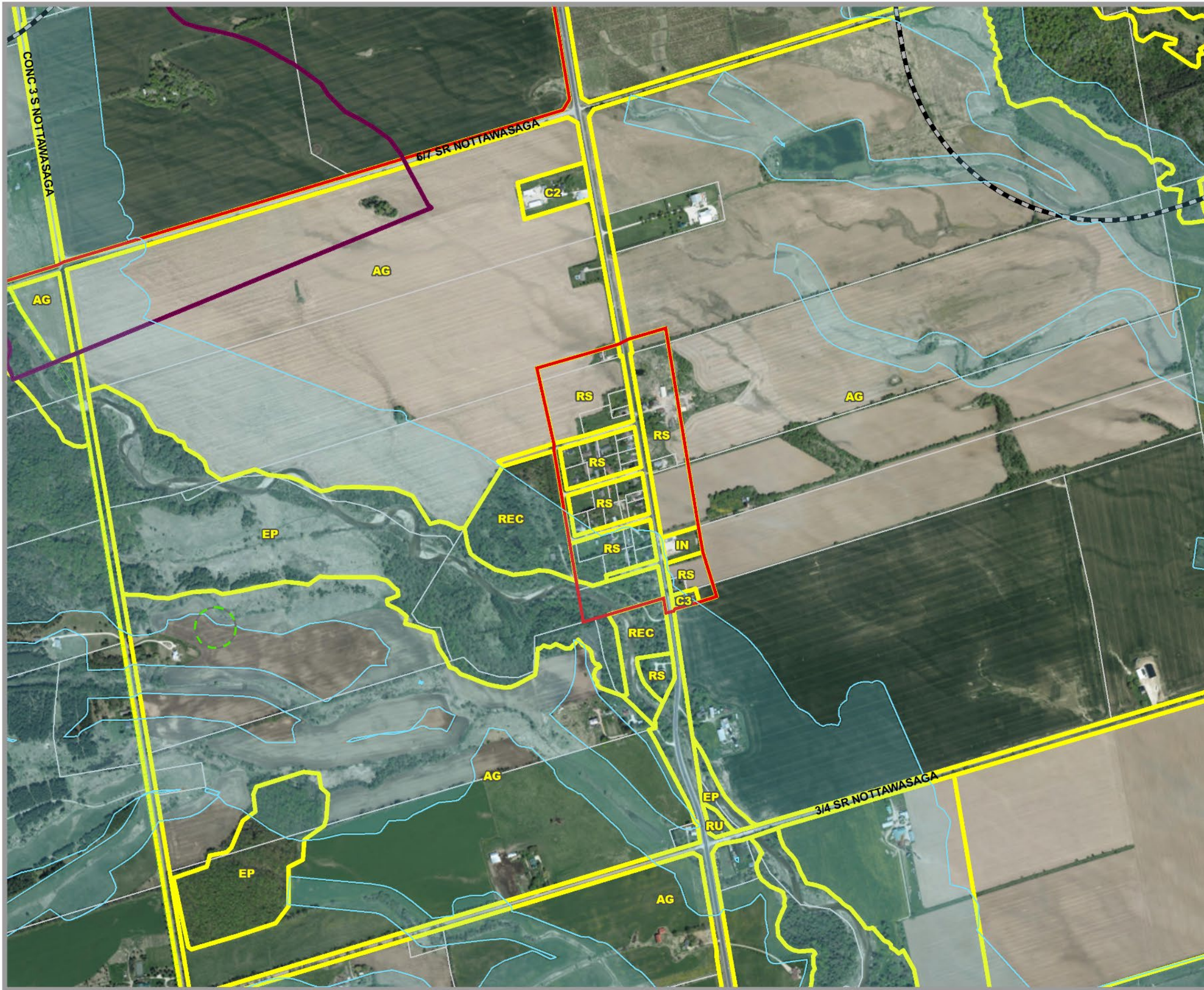
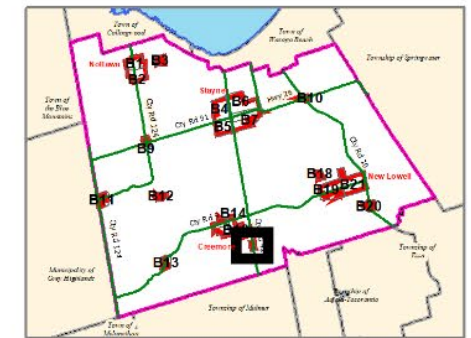


CLEARVIEW TOWNSHIP COMPREHENSIVE ZONING BY-LAW

SCHEDULE B17 AVENING AREA



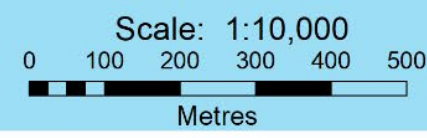
AGRICULTURAL	AG AGRICULTURAL	AGC AGRICULTURALLY RELATED COMMERCIAL	AG-EL AGRICULTURAL LIVESTOCK USE EXCEPTION	AG-ER AGRICULTURAL RESIDENTIAL USE EXCEPTION	AGI AGRICULTURALLY RELATED INDUSTRIAL	AGK AGRICULTURAL KENNEL	MG INDUSTRIAL GENERAL	MP INDUSTRIAL PRESTIGE	MR INDUSTRIAL RESTRICTED	MW INDUSTRIAL WASTE DISPOSAL
COMMERCIAL	C1 COMMERCIAL GENERAL	C2 COMMERCIAL HIGHWAY	C3 COMMERCIAL SERVICE	C4 COMMERCIAL LARGE FORMAT	C5 COMMERCIAL NEIGHBOURHOOD	C6 COMMERCIAL COUNTRY	CT1 COMMERCIAL TRANSITION 1	CT2 COMMERCIAL TRANSITION 2	RECC COMMERCIAL RECREATION LANDS	
ENVIRONMENTAL	EP ENVIRONMENTAL PROTECTION									
DEVELOPMENT AREA	DA DEVELOPMENT AREA									
INSTITUTIONAL	IN INSTITUTIONAL	INR1 INSTITUTIONAL RESIDENTIAL 1	INR2 INSTITUTIONAL RESIDENTIAL 2							
INDUSTRIAL	MA INDUSTRIAL AIRPORT									
							NIAGARA ESCARPMENT	NEC NIAGARA ESCARPMENT COMMISSION		
							RECREATION	REC RECREATION LANDS	RECT RECREATIONAL TRAIL	
							RESIDENTIAL	RE RESIDENTIAL ESTATE	RS RESIDENTIAL HAMLET	RS1 RESIDENTIAL LARGE LOT
								RS2 RESIDENTIAL LOW DENSITY	RS3 RESIDENTIAL MULTIPLE LOW DENSITY	RS4 RESIDENTIAL MEDIUM DENSITY
								RS5 RESIDENTIAL MULTIPLE MEDIUM DENSITY	RS6 RESIDENTIAL HIGH DENSITY	RSBB SETTLEMENT AREA B&B
										RURAL
										RU RURAL
										RUK RURAL KENNEL

- Settlement Area Boundary
- Commercial Transition 1 Area
- FP Hazard Land Area
- FPSP Hazard Land Special Policy
- MARA Mineral Aggregate Resource Area
- WDAA Waste Disposal Assessment Area
- WHPA Well Head Protection Area
- Subject to Appeal Before OMB
- Niagara Escarpment Boundary
- Zone Boundary
- Parcel Boundary
- Utility Line
- Railway
- Abandoned Railway

By-Law 06-54
As Approved by Council, October 23, 2006

Fran Sainsbury
Fran Sainsbury, Mayor
Robert Campbell
Robert Campbell, Clerk

This map, other in whole or in part, may not be reproduced without the written authority from the County of Simcoe. Copyright © County of Simcoe. Land Information Systems Corporation - LINC 2014. Produced on your behalf by LINC. The County of Simcoe & LINC do not warrant the accuracy of the information contained in this map. All rights reserved. For information call (705) 726-0300 or visit www.linc.ca



Note: All the elements in the legend may not appear on the map.
SCHEDULE B17 AVENING PDF