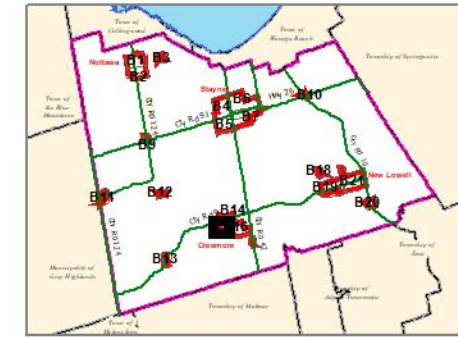
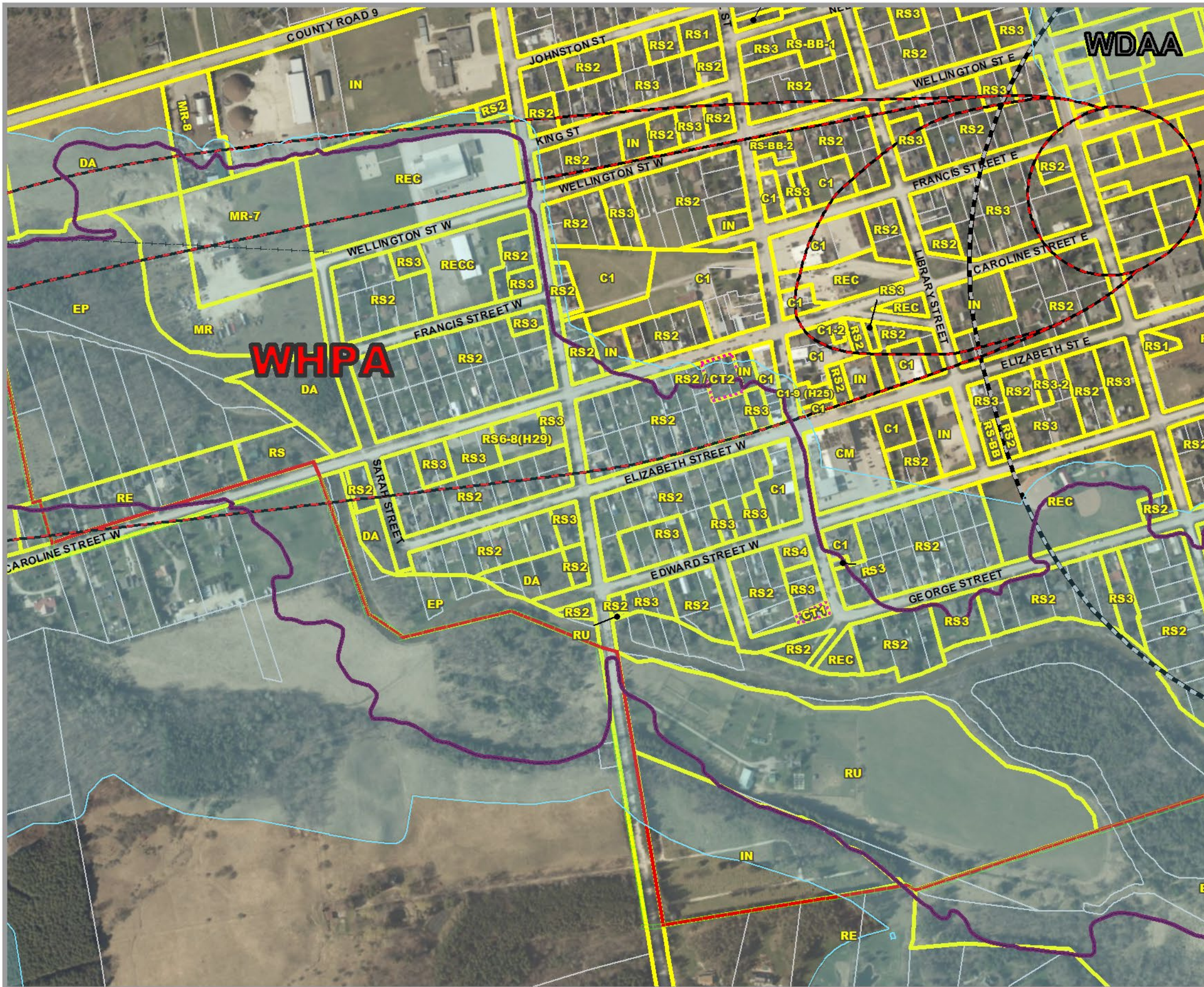


# CLEARVIEW TOWNSHIP COMPREHENSIVE ZONING BY-LAW

## SCHEDULE B15 SOUTHWEST CREEMORE AREA

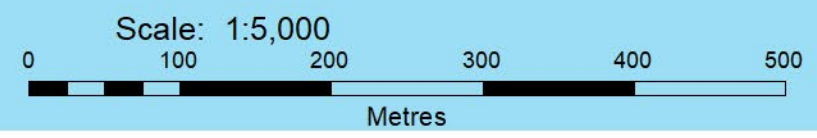


<b>AGRICULTURAL</b>	AG	AGRICULTURAL	MG	INDUSTRIAL GENERAL
AGC	AGRICULTURALLY RELATED COMMERCIAL	MP	INDUSTRIAL PRESTIGE	
AG-EL	AGRICULTURAL LIVESTOCK USE EXCEPTION	MR	INDUSTRIAL RESTRICTED	
AG-ER	AGRICULTURAL RESIDENTIAL USE EXCEPTION	MW	INDUSTRIAL WASTE DISPOSAL	
AGI	AGRICULTURALLY RELATED INDUSTRIAL	<b>NIAGARA ESCARPMENT</b>		
AGK	AGRICULTURAL KENNEL	NEC	NIAGARA ESCARPMENT COMMISSION	
<b>COMMERCIAL</b>	C1	COMMERCIAL GENERAL	<b>RECREATION</b>	
C2	COMMERCIAL HIGHWAY	C2	RECREATION LANDS	
C3	COMMERCIAL SERVICE	RECT	RECREATIONAL TRAIL	
C4	COMMERCIAL LARGE FORMAT	<b>RESIDENTIAL</b>		
C5	COMMERCIAL NEIGHBOURHOOD	RE	RESIDENTIAL ESTATE	
C6	COMMERCIAL COUNTRY	RS	RESIDENTIAL HAMLET	
CT1	COMMERCIAL TRANSITION 1	RS1	RESIDENTIAL LARGE LOT	
CT2	COMMERCIAL TRANSITION 2	RS2	RESIDENTIAL LOW DENSITY	
RECC	COMMERCIAL RECREATION LANDS	RS3	RESIDENTIAL MULTIPLE LOW DENSITY	
<b>ENVIRONMENTAL</b>	EP	ENVIRONMENTAL PROTECTION	RS4	RESIDENTIAL MEDIUM DENSITY
<b>DEVELOPMENT AREA</b>	DA	DEVELOPMENT AREA	RS5	RESIDENTIAL MULTIPLE MEDIUM DENSITY
<b>INSTITUTIONAL</b>	IN	INSTITUTIONAL	RS6	RESIDENTIAL HIGH DENSITY
INR1	INSTITUTIONAL RESIDENTIAL 1	RSBB	SETTLEMENT AREA B&B	
INR2	INSTITUTIONAL RESIDENTIAL 2	<b>RURAL</b>		
<b>INDUSTRIAL</b>	MA	INDUSTRIAL AIRPORT	RU	RURAL
			RUK	RURAL KENNEL

- Settlement Area Boundary
- Commercial Transition 1 Area
- FP Hazard Land Area
- FPSP Hazard Land Special Policy
- MARA Mineral Aggregate Resource Area
- WDAA Waste Disposal Assessment Area
- WHPA Well Head Protection Area
- Subject to Appeal Before OMB
- Niagara Escarpment Boundary
- Zone Boundary
- Parcel Boundary
- Utility Line
- Railway
- Abandoned Railway

By-Law 06-54  
As Approved by Council, October 23, 2006  
*Fran Sansbury*  
Fran Sansbury, Mayor  
*Robert Campbell*  
Robert Campbell, Clerk

**LINC**  
LOCAL INFORMATION NETWORK  
This map, either in whole or in part, may not be reproduced without the written authority from the County of Simcoe.  
Copyright © County of Simcoe  
Last information network appearance: 1-1-2014  
Produced in partnership with the City of Barrie & Collins, the County of Simcoe, the County of Huron & Perth, the County of Wellington & Perth, the County of York & Simcoe, the County of York & Simcoe, and the County of York & Simcoe.  
BIRD IS NOT A CLASS OF SERVICE.  
For information call 705-720-6100 or visit www.linc.ca



Note: All the elements in the legend may not appear on the map.  
SCHEDULE B15 SOUTHWEST CREEMORE.PDF