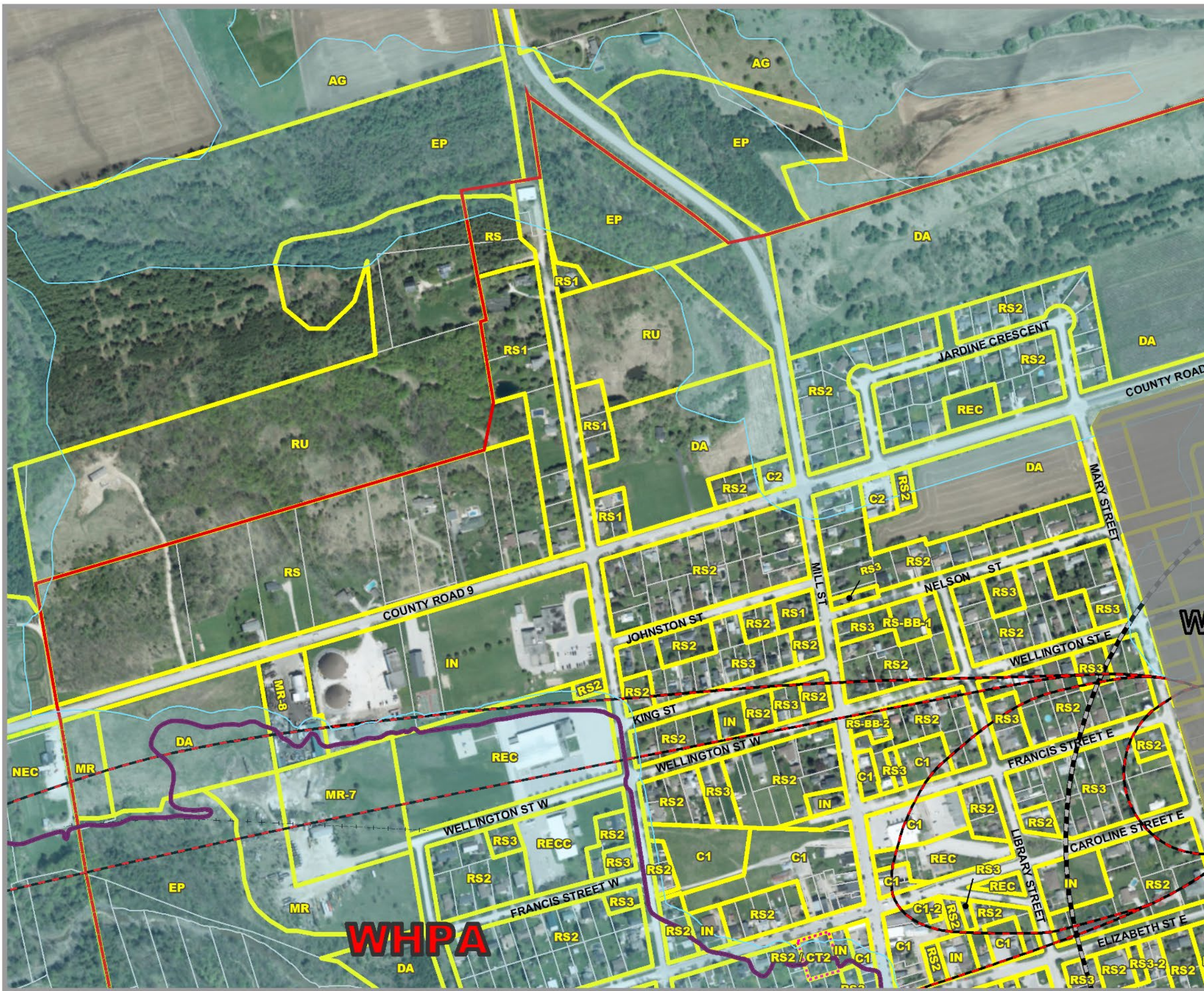
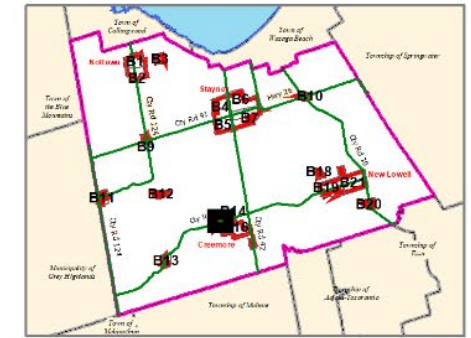


CLEARVIEW TOWNSHIP COMPREHENSIVE ZONING BY-LAW

SCHEDULE B14 NORTHWEST CREEMORE AREA

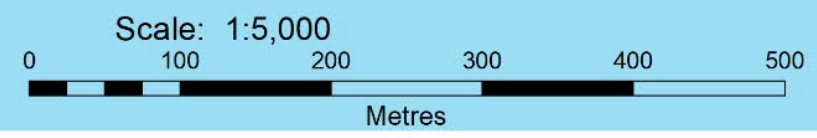


AGRICULTURAL	AG AGRICULTURAL	AGC AGRICULTURALLY RELATED COMMERCIAL	AG-EL AGRICULTURAL LIVESTOCK USE EXCEPTION	AG-ER AGRICULTURAL RESIDENTIAL USE EXCEPTION	AGI AGRICULTURALLY RELATED INDUSTRIAL	AGK AGRICULTURAL KENNEL	MG INDUSTRIAL GENERAL	MP INDUSTRIAL PRESTIGE	MR INDUSTRIAL RESTRICTED	MW INDUSTRIAL WASTE DISPOSAL
COMMERCIAL	C1 COMMERCIAL GENERAL	C2 COMMERCIAL HIGHWAY	C3 COMMERCIAL SERVICE	C4 COMMERCIAL LARGE FORMAT	C5 COMMERCIAL NEIGHBOURHOOD	C6 COMMERCIAL COUNTRY	CT1 COMMERCIAL TRANSITION 1	CT2 COMMERCIAL TRANSITION 2	RECC COMMERCIAL RECREATION LANDS	
ENVIRONMENTAL	EP ENVIRONMENTAL PROTECTION									
DEVELOPMENT AREA	DA DEVELOPMENT AREA									
INSTITUTIONAL	IN INSTITUTIONAL	INR1 INSTITUTIONAL RESIDENTIAL 1	INR2 INSTITUTIONAL RESIDENTIAL 2							
INDUSTRIAL	MA INDUSTRIAL AIRPORT									
							NIAGARA ESCARPMENT	NEC NIAGARA ESCARPMENT COMMISSION		
							RECREATION	REC RECREATION LANDS	RECT RECREATIONAL TRAIL	
							RESIDENTIAL	RE RESIDENTIAL ESTATE	RS RESIDENTIAL HAMLET	RS1 RESIDENTIAL LARGE LOT
								RS2 RESIDENTIAL LOW DENSITY	RS3 RESIDENTIAL MULTIPLE LOW DENSITY	RS4 RESIDENTIAL MEDIUM DENSITY
								RS5 RESIDENTIAL MULTIPLE MEDIUM DENSITY	RS6 RESIDENTIAL HIGH DENSITY	RSBB SETTLEMENT AREA B&B
										RURAL
										RU RURAL
										RUK RURAL KENNEL

Settlement Area Boundary	Subject to Appeal Before OMB
Commercial Transition 1 Area	Niagara Escarpment Boundary
FP Hazard Land Area	Zone Boundary
FPSP Hazard Land Special Policy	Parcel Boundary
MARA Mineral Aggregate Resource Area	Utility Line
WDAA Waste Disposal Assessment Area	Railway
WHPA Well Head Protection Area	Abandoned Railway

By-Law 06-54
As Approved by Council, October 23, 2006
Fran Sainsbury
Fran Sainsbury, Mayor
Robert Campbell
Robert Campbell, Clerk

LINC
This map, either in whole or in part, may not be reproduced without the written authority from the County of Simcoe.
Copyright © County of Simcoe
Land Information Systems/Geomatics - LINC 2014
Produced for you by Geo Information Systems, the County of Simcoe & Staff, Inc.
Revised: Ministry of Natural Resources & Forestry - Ontario - October 2014
© Crown Copyright and the copyright of the author, and the copyright of the County of Simcoe, and the copyright of the County of Simcoe.
11155 RIVERVIEW AVENUE, SUITE 100
SCARBOROUGH, ONTARIO M1V 4Y7
For information call: (416) 735-5300 or visit www.linc.ca



Note: All the elements in the legend may not appear on the map.
SCHEDULE B14 NORTHWEST CREEMORE PDF