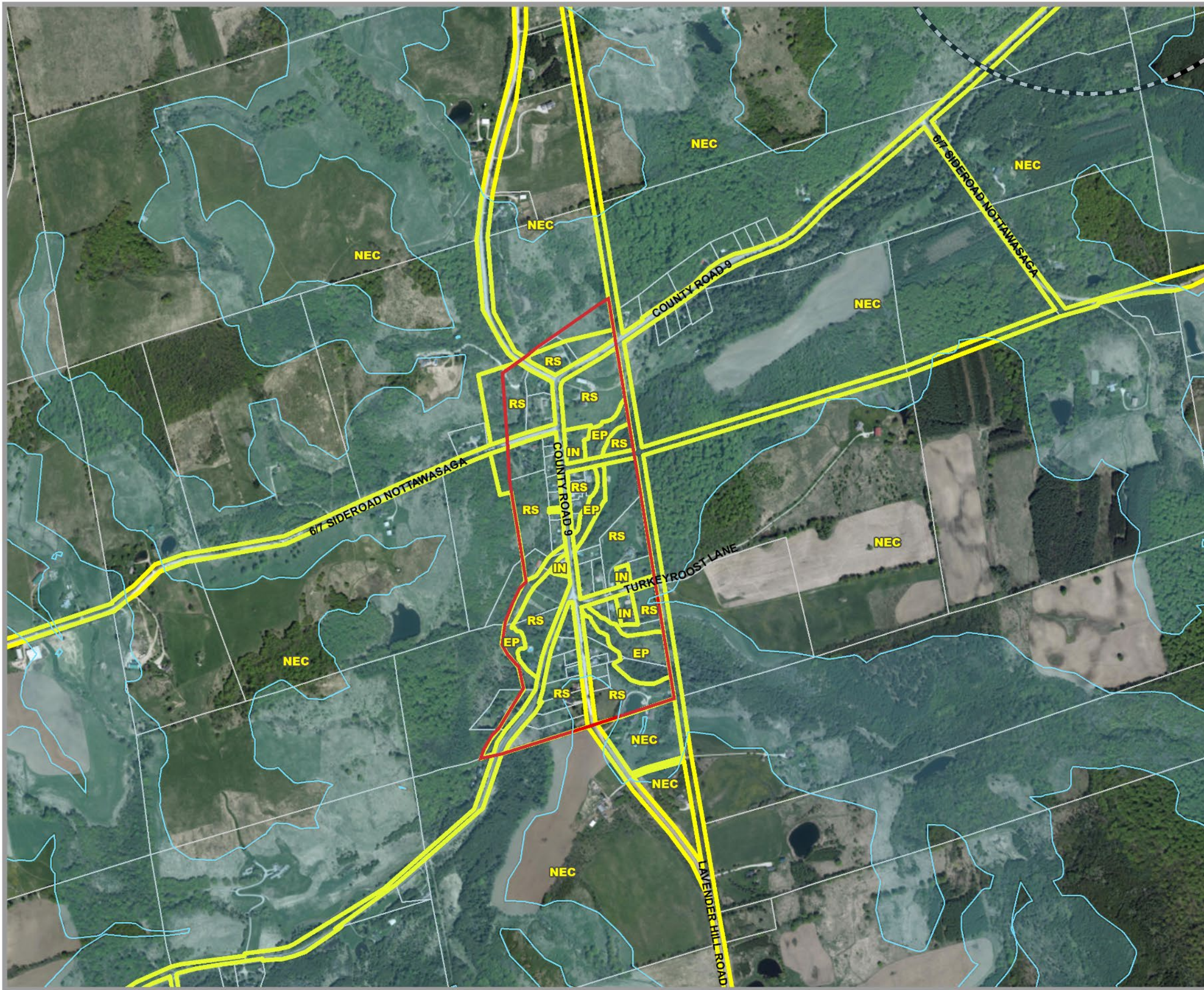
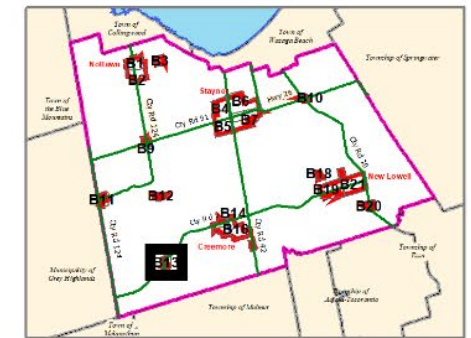


# CLEARVIEW TOWNSHIP COMPREHENSIVE ZONING BY-LAW

## SCHEDULE B13 DUNEDIN AREA



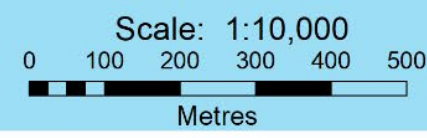
<b>AGRICULTURAL</b>	AG AGRICULTURAL	AGC AGRICULTURALLY RELATED COMMERCIAL	AG-EL AGRICULTURAL LIVESTOCK USE EXCEPTION	AG-ER AGRICULTURAL RESIDENTIAL USE EXCEPTION	AGI AGRICULTURALLY RELATED INDUSTRIAL	AGK AGRICULTURAL KENNEL	MG INDUSTRIAL GENERAL	MP INDUSTRIAL PRESTIGE	MR INDUSTRIAL RESTRICTED	MW INDUSTRIAL WASTE DISPOSAL
<b>COMMERCIAL</b>	C1 COMMERCIAL GENERAL	C2 COMMERCIAL HIGHWAY	C3 COMMERCIAL SERVICE	C4 COMMERCIAL LARGE FORMAT	C5 COMMERCIAL NEIGHBOURHOOD	C6 COMMERCIAL COUNTRY	CT1 COMMERCIAL TRANSITION 1	CT2 COMMERCIAL TRANSITION 2	RECC COMMERCIAL RECREATION LANDS	
<b>ENVIRONMENTAL</b>	EP ENVIRONMENTAL PROTECTION									
<b>DEVELOPMENT AREA</b>	DA DEVELOPMENT AREA									
<b>INSTITUTIONAL</b>	IN INSTITUTIONAL	INR1 INSTITUTIONAL RESIDENTIAL 1	INR2 INSTITUTIONAL RESIDENTIAL 2							
<b>INDUSTRIAL</b>	MA INDUSTRIAL AIRPORT									
									<b>RECREATION</b>	
									REC RECREATION LANDS	
									RECT RECREATIONAL TRAIL	
									<b>RESIDENTIAL</b>	
									RE RESIDENTIAL ESTATE	
									RS RESIDENTIAL HAMLET	
									RS1 RESIDENTIAL LARGE LOT	
									RS2 RESIDENTIAL LOW DENSITY	
									RS3 RESIDENTIAL MULTIPLE LOW DENSITY	
									RS4 RESIDENTIAL MEDIUM DENSITY	
									RS5 RESIDENTIAL MULTIPLE MEDIUM DENSITY	
									RS8 RESIDENTIAL HIGH DENSITY	
									RSBB SETTLEMENT AREA B&B	
									<b>RURAL</b>	
									RU RURAL	
									RUK RURAL KENNEL	

- Settlement Area Boundary
- Commercial Transition 1 Area
- FP Hazard Land Area
- FPSP Hazard Land Special Policy
- MARA Mineral Aggregate Resource Area
- WDA Waste Disposal Assessment Area
- WHPA Well Head Protection Area
- Subject to Appeal Before OMB
- Niagara Escarpment Boundary
- Zone Boundary
- Parcel Boundary
- Utility Line
- Railway
- Abandoned Railway

By-Law 06-54  
As Approved by Council, October 23, 2006

*Fran Sainsbury*  
Fran Sainsbury, Mayor  
*Robert Campbell*  
Robert Campbell, Clerk

**LINC**  
LAND INFORMATION CENTRE  
This map, either in whole or in part, may not be reproduced without the written authority of the County of Simcoe.  
Copyright © County of Simcoe  
Land Information Centre  
Produced for you by LINC Simcoe, the County of Simcoe's Land Information Centre.  
LINC Simcoe is a member of the Ontario Land Information Centre Association (OLICA).  
LINC Simcoe is a member of the Ontario Land Information Centre Association (OLICA).  
LINC Simcoe is a member of the Ontario Land Information Centre Association (OLICA).  
For information call (705) 726-0300 or visit www.linc.ca



Note: All the elements in the legend may not appear on the map.  
SCHEDULE B13 DUNEDIN.PDF