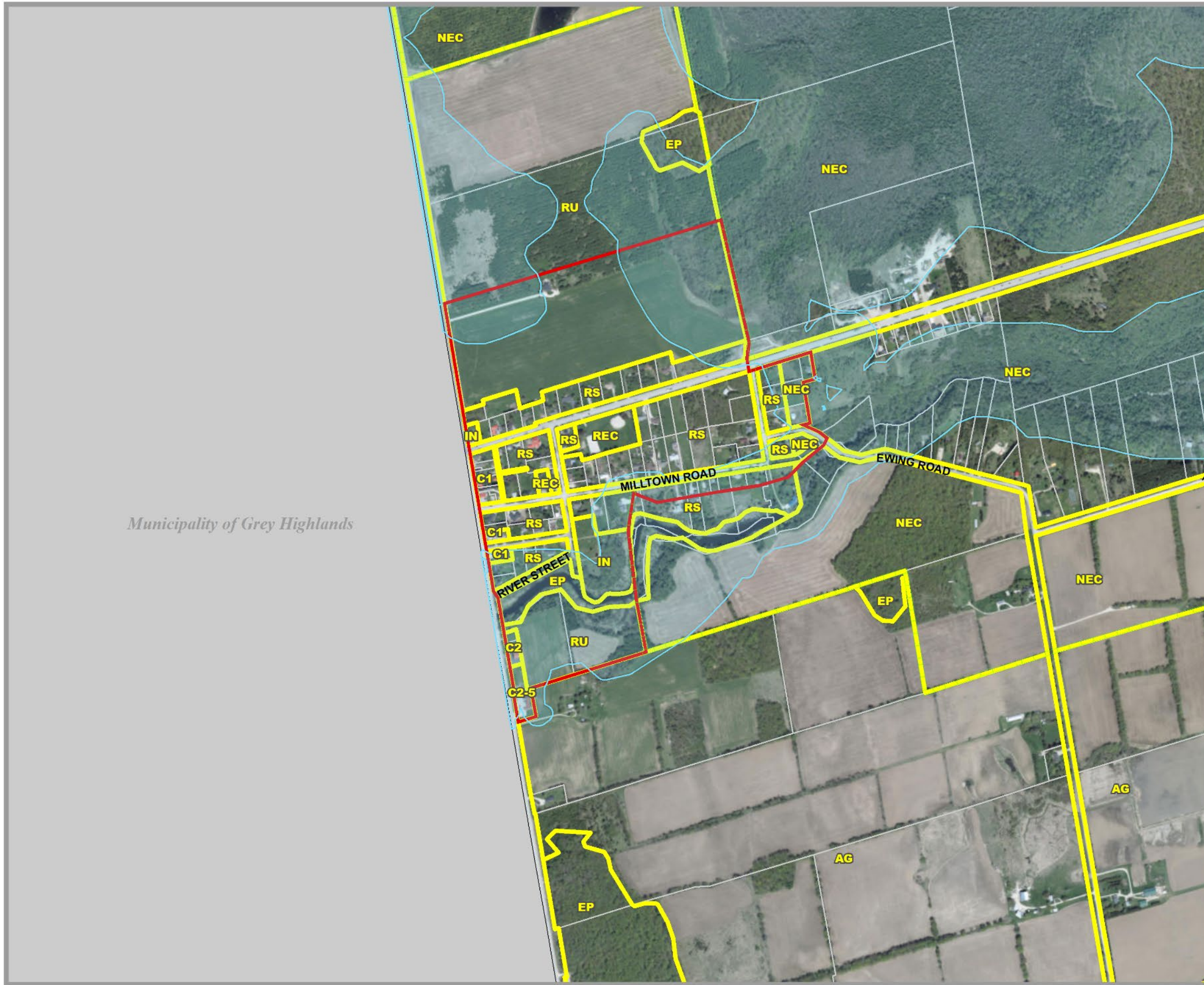
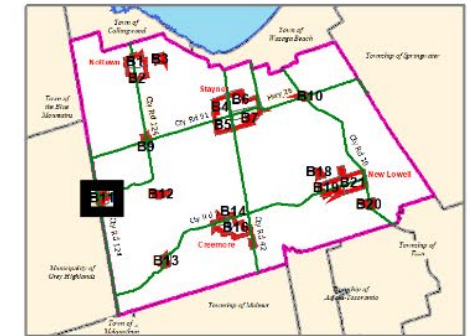


CLEARVIEW TOWNSHIP COMPREHENSIVE ZONING BY-LAW

SCHEDULE B11 SINGHAMPTON AREA



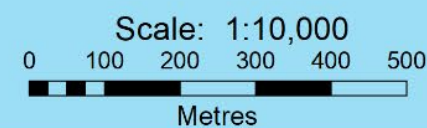
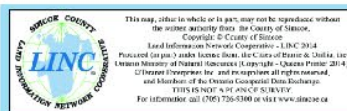
Municipality of Grey Highlands

AGRICULTURAL		MG	INDUSTRIAL GENERAL
AG	AGRICULTURAL	MP	INDUSTRIAL PRESTIGE
AGC	AGRICULTURALLY RELATED COMMERCIAL	MR	INDUSTRIAL RESTRICTED
AG-EL	AGRICULTURAL LIVESTOCK USE EXCEPTION	MW	INDUSTRIAL WASTE DISPOSAL
AG-ER	AGRICULTURAL RESIDENTIAL USE EXCEPTION	NIAGARA ESCARPMENT	
AGI	AGRICULTURALLY RELATED INDUSTRIAL	NEC	NIAGARA ESCARPMENT COMMISSION
AGK	AGRICULTURAL KENNEL	RECREATION	
COMMERCIAL		REC	RECREATION LANDS
C1	COMMERCIAL GENERAL	RECT	RECREATIONAL TRAIL
C2	COMMERCIAL HIGHWAY	RESIDENTIAL	
C3	COMMERCIAL SERVICE	RE	RESIDENTIAL ESTATE
C4	COMMERCIAL LARGE FORMAT	RS	RESIDENTIAL HAMLET
C5	COMMERCIAL NEIGHBOURHOOD	RS1	RESIDENTIAL LARGE LOT
C6	COMMERCIAL COUNTRY	RS2	RESIDENTIAL LOW DENSITY
CT1	COMMERCIAL TRANSITION 1	RS3	RESIDENTIAL MULTIPLE LOW DENSITY
CT2	COMMERCIAL TRANSITION 2	RS4	RESIDENTIAL MEDIUM DENSITY
RECC	COMMERCIAL RECREATION LANDS	RS5	RESIDENTIAL MULTIPLE MEDIUM DENSITY
ENVIRONMENTAL		RS8	RESIDENTIAL HIGH DENSITY
EP	ENVIRONMENTAL PROTECTION	RSBB	SETTLEMENT AREA B&B
DEVELOPMENT AREA		RURAL	
DA	DEVELOPMENT AREA	RU	RURAL
INSTITUTIONAL		RUK	RURAL KENNEL
IN	INSTITUTIONAL		
INR1	INSTITUTIONAL RESIDENTIAL 1		
INR2	INSTITUTIONAL RESIDENTIAL 2		
INDUSTRIAL			
MA	INDUSTRIAL AIRPORT		

Settlement Area Boundary	Subject to Appeal Before OMB
Commercial Transition 1 Area	Niagara Escarpment Boundary
FP Hazard Land Area	Zone Boundary
FPSP Hazard Land Special Policy	Parcel Boundary
MARA Mineral Aggregate Resource Area	Utility Line
WDA Waste Disposal Assessment Area	Railway
WHPA Well Head Protection Area	Abandoned Railway

By-Law 06-54
As Approved by Council, October 23, 2006

Fran Sainsbury
Fran Sainsbury, Mayor
Robert Campbell
Robert Campbell, Clerk



Note: All the elements in the legend may not appear on the map.
SCHEDULE B11 SINGHAMPTON.PDF