



Lighting Calculation Study

Our global brands are

PHILIPS interact

281 Hillmount Road, Markham, Ontario, Canada, L6C 2S3
Office: 905-201-4944

Project name : Agripharm Bldg - 2741 Count Rd 42 - Clearview

Prepared For : Steve Stanton @ AMG Baytech / Wallwin Electric

Filename: Agripharm Building - 2741 Count Rd 42 - Clearview - Ont - Site - r10 - Feb 7-2019.AGI

By : Linda Zimbalatti

Date:2019-02-08

AGi32 Version 19.3.17





Total Time (Hrs.): 17.92

Units: Feet

Page 1 of 9

DISCLAIMER: Calculations have been performed according to IESNA & CIE standards and goodpractice. Some differences between measured values and calculated results may occur due to tolerances in calculation methods, testing procedures, component performance, measurement techniques and field conditions such as voltage and temperature variations. Input data used to generate the attached calculations such as room dimensions, reflectances, furniture and architectural elements significantly affect the lightingcalculations. If the real environment conditions do not match the input data, differences will occur between measured values and calculated values.

Results summary

Luminaire Schedule								
Symbol	Qty	Label	Arrangement	LLF	Description	Lum. Watts	Lum. Lumens	[MANUFAC]
	31	W1	SINGLE	0.900	LPW32-7	70.5	6910	SIGNIFY STONCO/KEENE
	8	P1	SINGLE	0.900	ECF-L-96L-1_2A-NW-G2-4-HIS	365	32742	SIGNIFY GARDCO
	1	P2	SINGLE	0.900	ECF-L-96L-1_2A-NW-G2-3-HIS	365	31723	SIGNIFY GARDCO
	1	P3	SINGLE	0.900	ECF-L-96L-1_2A-NW-G2-5W	365	41559	SIGNIFY GARDCO

Calculation Summary							
Label	CalcType	Units	Avg	Max	Min	Avg/Min	Max/Min
SITE	Illuminance	Fc	0.86	7.5	0.0	N.A.	N.A.

TYPE P1 & P2



TYPE W1



281 Hillmount Road, Markham, Ontario, Canada, L6C 2S3
Office: 905-201-4944

Project name : Agriphar Bldg - 2741 Count Rd 42 - Clearview

Prepared For : Steve Stanton @ AMG Baytech / Wallwin Electric

Filename: Agriphar Building - 2741 Count Rd 42 - Clearview - Ont - Site - r10 - Feb 7-2019.AGI

By : Linda Zimbalatti

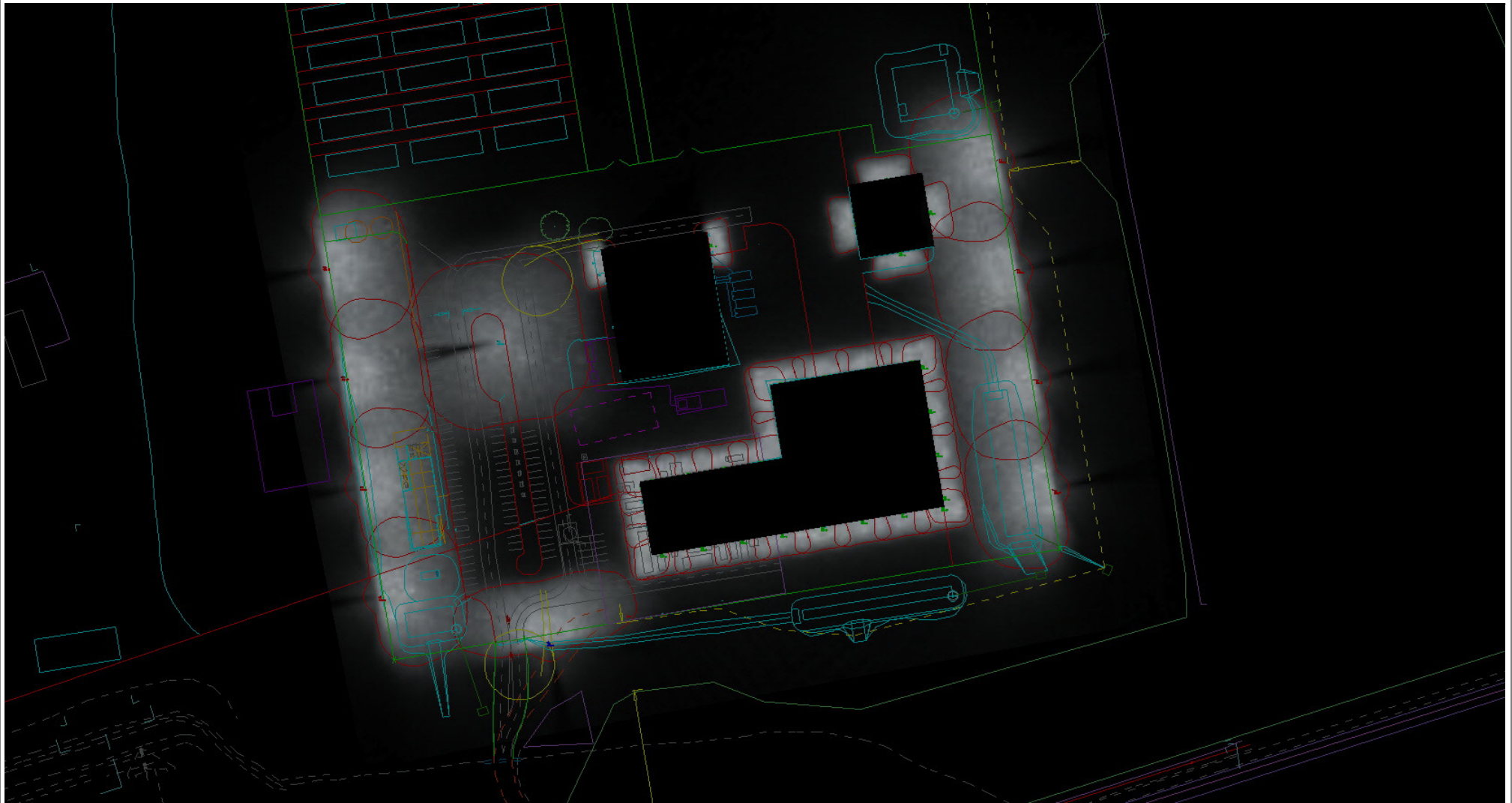
Units: Feet

Date:2019-02-08

AGI32 Version 19.3.17

Total Time (Hrs.): 17.92

DISCLAIMER: Calculations have been performed according to IESNA & CIE standards and goodpractice. Some differences between measured values and calculated results may occur due to tolerances in calculation methods, testing procedures, component performance, measurement techniques and field conditions such as voltage and temperature variations. Input data used to generate the attached calculations such as room dimensions, reflectances, furniture and architectural elements significantly affect the lighting calculations. If the real environment conditions do not match the input data, differences will occur between measured values and calculated values.



281 Hillmount Road, Markham, Ontario, Canada, L6C 2S3
Office: 905-201-4944

DISCLAIMER: Calculations have been performed according to IESNA & CIE standards and good practice. Some differences between measured values and calculated results may occur due to tolerances in calculation methods, testing procedures, component performance, measurement techniques and field conditions such as voltage and temperature variations. Input data used to generate the attached calculations such as room dimensions, reflectances, furniture and architectural elements significantly affect the lighting calculations. If the real environment conditions do not match the input data, differences will occur between measured values and calculated values.

Project name : Agripharma Bldg - 2741 Count Rd 42 - Clearview

Prepared For : Steve Stanton @ AMG Baytech / Wallwin Electric

Filename: Agripharma Building - 2741 Count Rd 42 - Clearview - Ont - Site - r10 - Feb 7-2019.AGI

By : Linda Zimbalatti

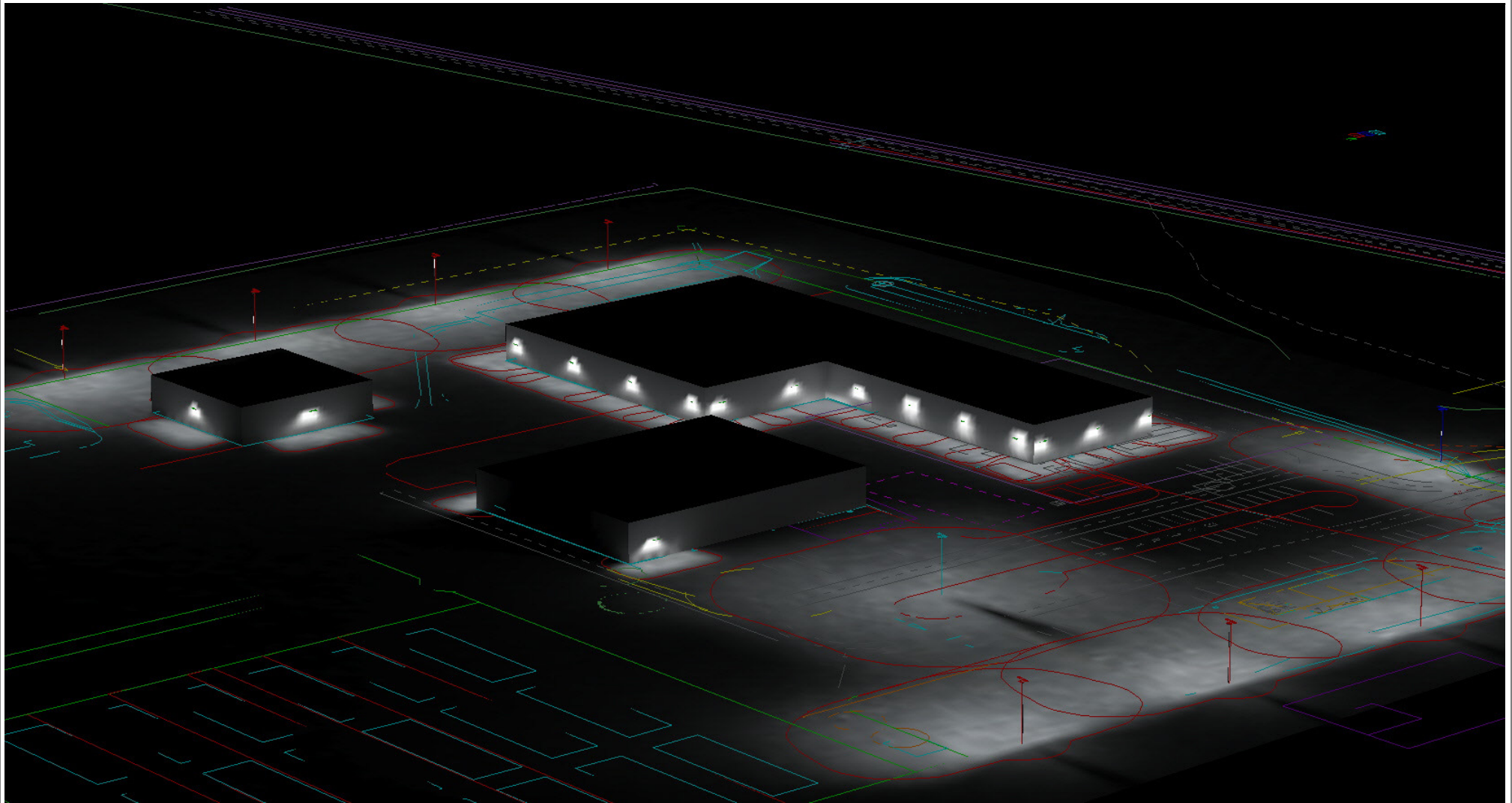
Units: Feet

Date:2019-02-08

AGI32 Version 19.3.17

Total Time (Hrs.): 17.92

Page 5 of 9



281 Hillmount Road, Markham, Ontario, Canada, L6C 2S3
Office: 905-201-4944

DISCLAIMER: Calculations have been performed according to IESNA & CIE standards and goodpractice. Some differences between measured values and calculated results may occur due to tolerances in calculation methods, testing procedures, component performance, measurement techniques and field conditions such as voltage and temperature variations. Input data used to generate the attached calculations such as room dimensions, reflectances, furniture and architectural elements significantly affect the lighting calculations. If the real environment conditions do not match the input data, differences will occur between measured values and calculated values.

Project name : Agripharm Bldg - 2741 Count Rd 42 - Clearview

Prepared For : Steve Stanton @ AMG Baytech / Wallwin Electric

Filename: Agripharm Building - 2741 Count Rd 42 - Clearview - Ont - Site - r10 - Feb 7-2019.AGI

By : Linda Zimbalatti

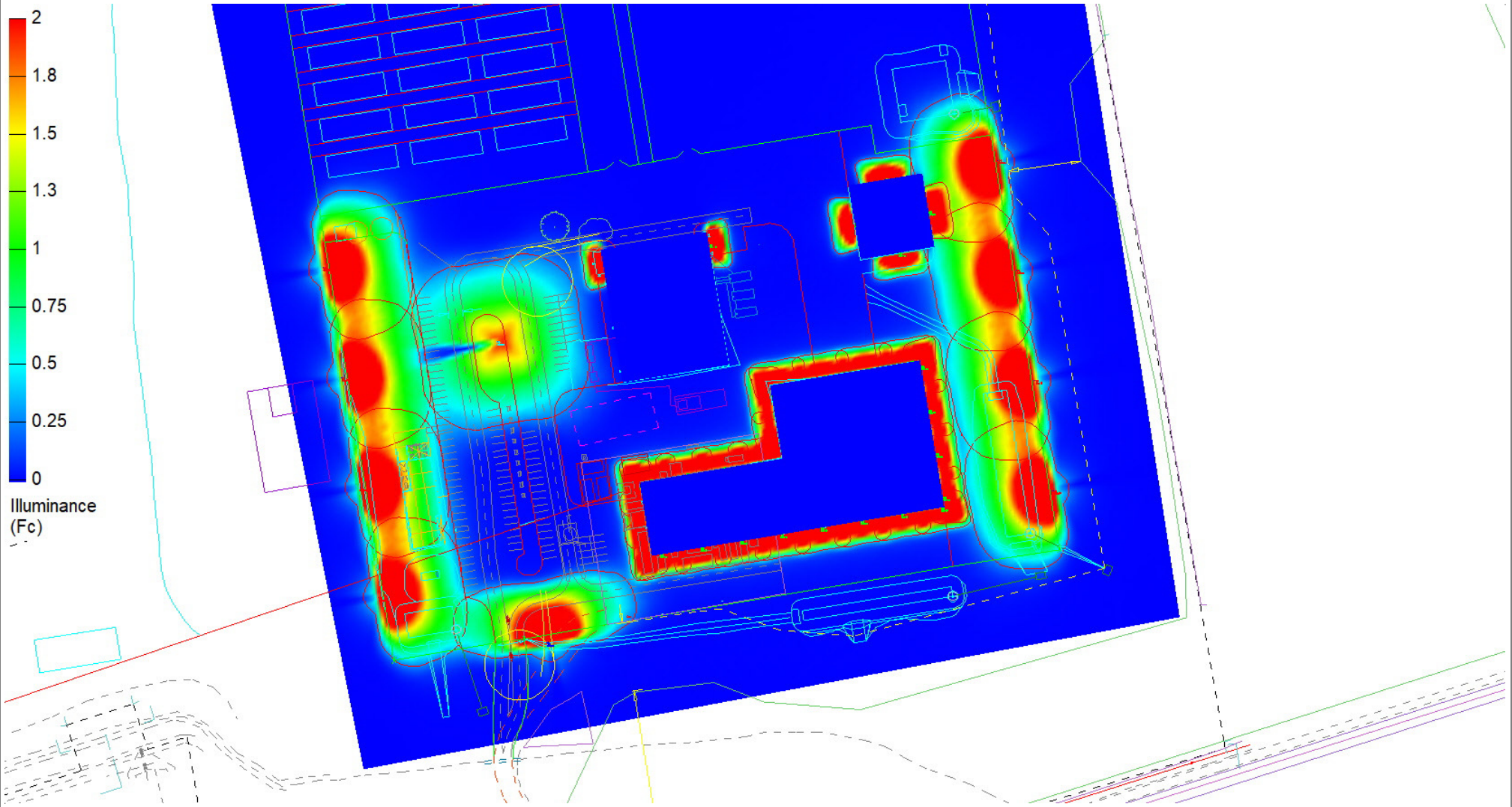
Units: Feet

Date:2019-02-08

AGI32 Version 19.3.17

Total Time (Hrs.): 17.92

Page 6 of 9



281 Hillmount Road, Markham, Ontario, Canada, L6C 2S3
 Office: 905-201-4944

Project name : Agripharm Bldg - 2741 Count Rd 42 - Clearview

Date:2019-02-08

Prepared For : Steve Stanton @ AMG Baytech / Wallwin Electric

AGi32 Version 19.3.17

Filename: Agripharm Building - 2741 Count Rd 42 - Clearview - Ont - Site - r10 - Feb 7-2019.AGI

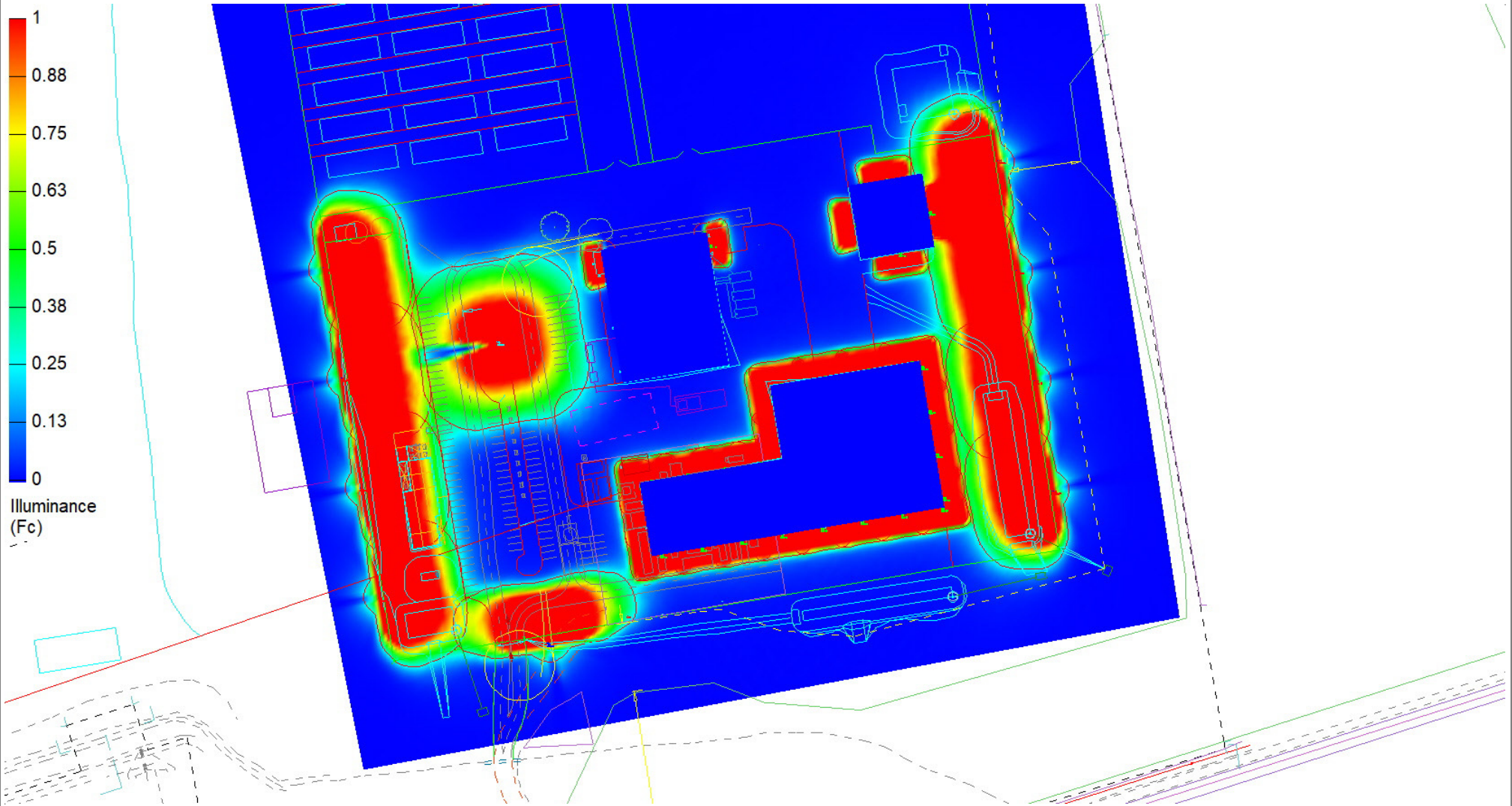
Total Time (Hrs.): 17.92

By : Linda Zimbalatti

Units: Feet

Page 7 of 9

DISCLAIMER: Calculations have been performed according to IESNA & CIE standards and goodpractice. Some differences between measured values and calculated results may occur due to tolerances in calculation methods, testing procedures, component performance, measurement techniques and field conditions such as voltage and temperature variations. Input data used to generate the attached calculations such as room dimensions, reflectances, furniture and architectural elements significantly affect the lighting calculations. If the real environment conditions do not match the input data, differences will occur between measured values and calculated values.



281 Hillmount Road, Markham, Ontario, Canada, L6C 2S3
Office: 905-201-4944

Project name : Agripharm Bldg - 2741 Count Rd 42 - Clearview

Date:2019-02-08

Prepared For : Steve Stanton @ AMG Baytech / Wallwin Electric

AGi32 Version 19.3.17

Filename: Agripharm Building - 2741 Count Rd 42 - Clearview - Ont - Site - r10 - Feb 7-2019.AGI

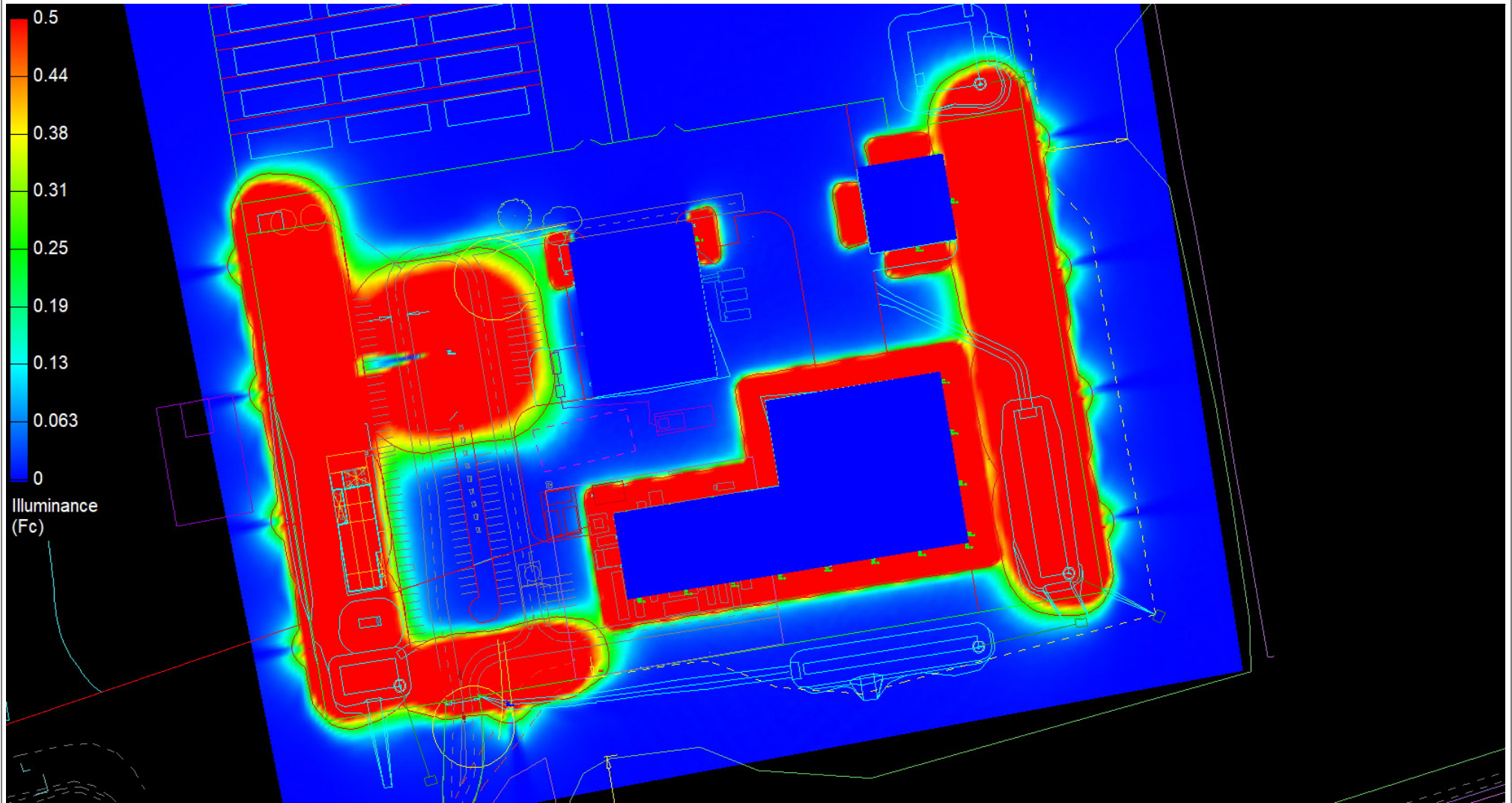
Total Time (Hrs.): 17.92

By : Linda Zimbalatti

Units: Feet

Page 8 of 9

DISCLAIMER: Calculations have been performed according to IESNA & CIE standards and goodpractice. Some differences between measured values and calculated results may occur due to tolerances in calculation methods, testing procedures, component performance, measurement techniques and field conditions such as voltage and temperature variations. Input data used to generate the attached calculations such as room dimensions, reflectances, furniture and architectural elements significantly affect the lightingcalculations. If the real environment conditions do not match the input data, differences will occur between measured values and calculated values.



281 Hillmount Road, Markham, Ontario, Canada, L6C 2S3
Office: 905-201-4944

DISCLAIMER: Calculations have been performed according to IESNA & CIE standards and good practice. Some differences between measured values and calculated results may occur due to tolerances in calculation methods, testing procedures, component performance, measurement techniques and field conditions such as voltage and temperature variations. Input data used to generate the attached calculations such as room dimensions, reflectances, furniture and architectural elements significantly affect the lighting calculations. If the real environment conditions do not match the input data, differences will occur between measured values and calculated values.

Project name : Agripharm Bldg - 2741 Count Rd 42 - Clearview

Prepared For : Steve Stanton @ AMG Baytech / Wallwin Electric

Filename: Agripharm Building - 2741 Count Rd 42 - Clearview - Ont - Site - r10 - Feb 7-2019.AGI

By : Linda Zimbalatti

Units: Feet

Date: 2019-02-08

AGI32 Version 19.3.17

Total Time (Hrs.): 17.92

Page 9 of 9