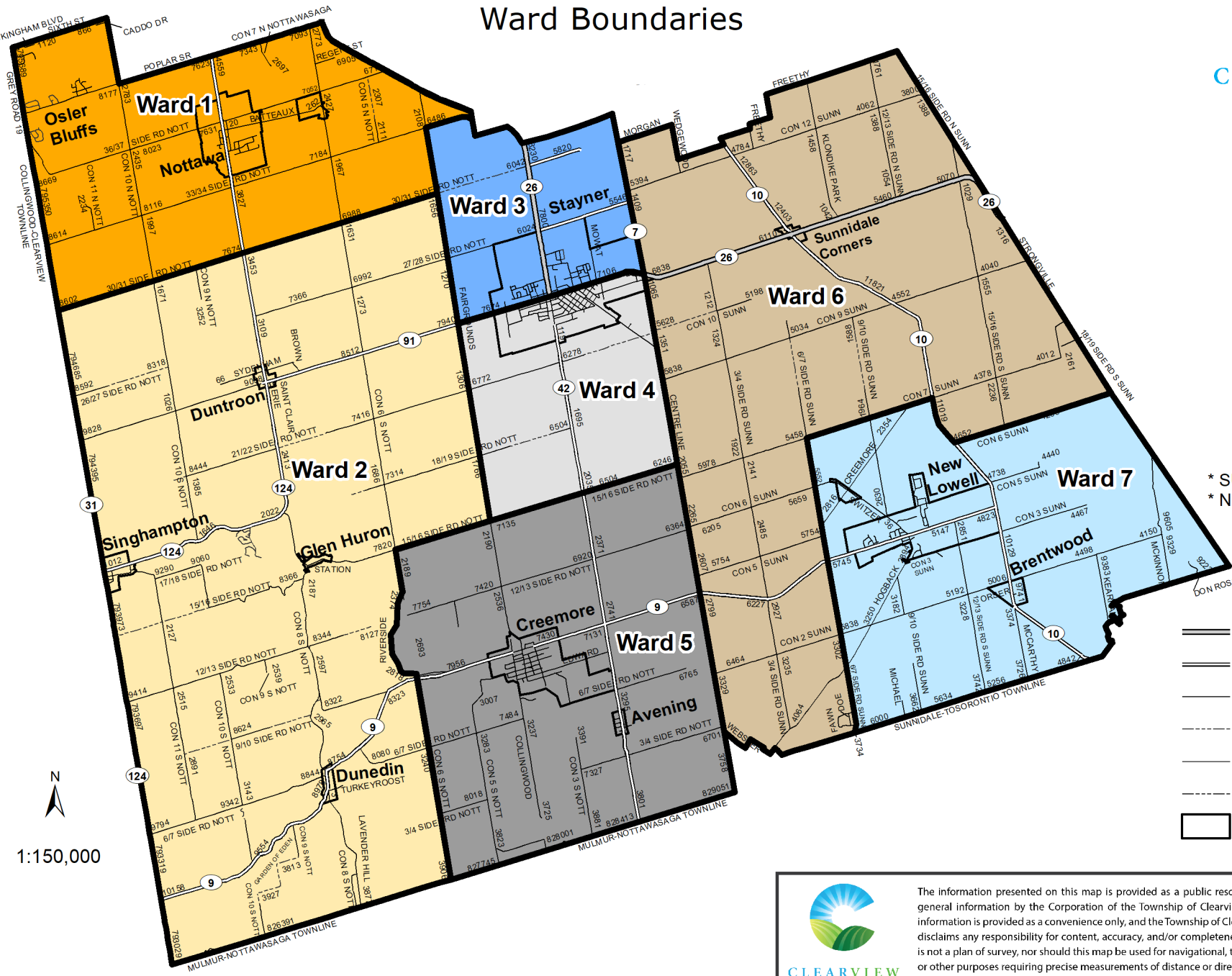


Clearview Township

Ward Boundaries



CLEARVIEW




WARD #

| | |
|--------------|---|
| Orange | 1 |
| Light Orange | 2 |
| Blue | 3 |
| Light Grey | 4 |
| Dark Grey | 5 |
| Tan | 6 |
| Light Blue | 7 |

* SUNN = SUNNIDALE
* NOTT = NOTTAWASAGA

- Provincial Roads
- County Roads
- Local Roads
- Local Seasonal Roads
- Private Roads
- Private Closed Roads
- Settlement Areas

N
1:150,000



The information presented on this map is provided as a public resource of general information by the Corporation of the Township of Clearview. The information is provided as a convenience only, and the Township of Clearview disclaims any responsibility for content, accuracy, and/or completeness. This is not a plan of survey, nor should this map be used for navigational, tracking or other purposes requiring precise measurements of distance or direction.

