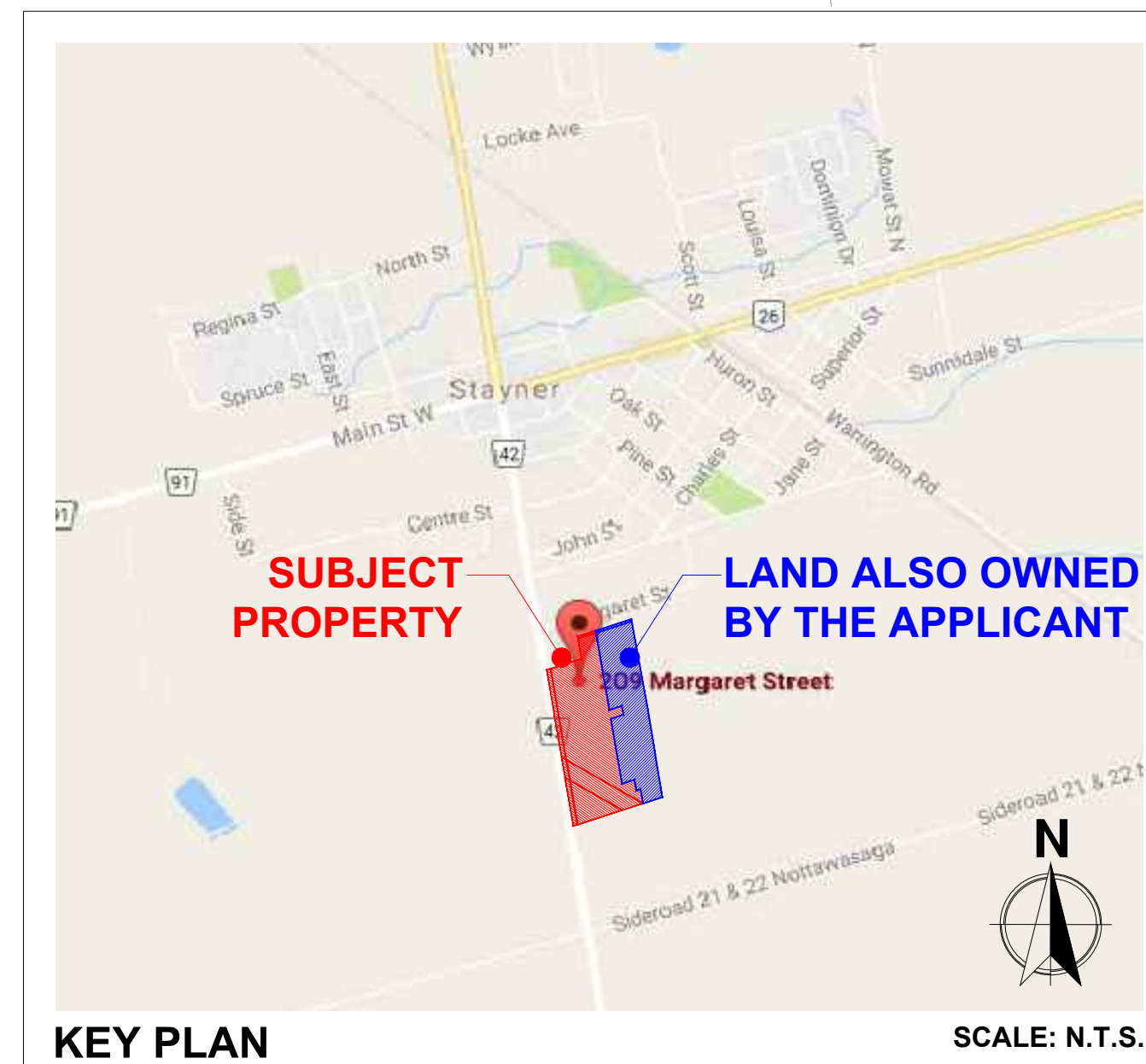
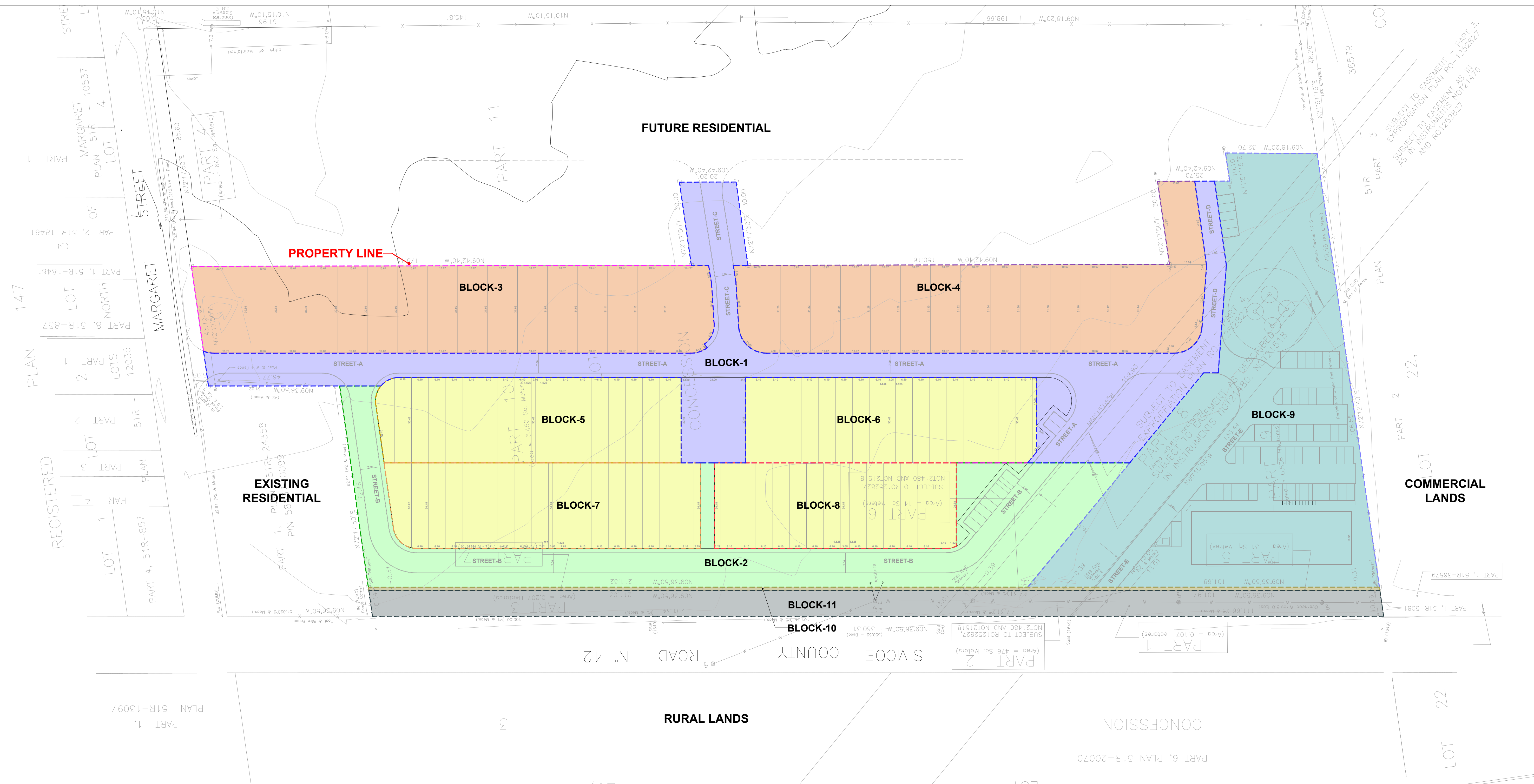


DEVELOPED BY:



**MAMTA HOMES**

CONSULTING PLANNER:



LAND USE SCHEDULE			
BLOCK TYPE / DESCRIPTION	BLOCK NO.	NO. OF UNITS	AREA (HA.)
STREET A, C & D (CEC-1) (INCL. LANDSCAPE AREA & OPEN SPACE, PART OF HYDRO EASEMENT)	BLOCK 1		0.677
STREET B (CEC-2) (INCL. TRAIL FOR AMENITY AREA, VISITOR PARKING, SIDEWALK, LANDSCAPE AREA & OPEN SPACE, PART OF HYDRO EASEMENT, SNOW STORAGE)	BLOCK 2		0.571
DETACHED HOMES	BLOCK 3	16	0.570
DETACHED HOMES (INCL. PART OF HYDRO EASEMENT)	BLOCK 4	15	0.558
TOWNHOUSES	BLOCK 5	16	0.327
TOWNHOUSES	BLOCK 6	16	0.315
TOWNHOUSES	BLOCK 7	16	0.336
TOWNHOUSES	BLOCK 8	13	0.262
FUTURE STANDARD CONDOMINIUM (INC. AMENITY AREA, STREET-E, PARKING, AISLE, LANDSCAPE AREA & OPEN SPACE, PART OF HYDRO EASEMENT)	BLOCK 9	36	0.985
RESERVE BLOCK	BLOCK 10		0.043
ROAD EASEMENT	BLOCK 11		0.329
<b>TOTAL SITE AREA</b>		<b>128</b>	<b>4.973</b>

**SURVEYOR'S CERTIFICATE**  
 I HEREBY CERTIFY THAT THE BOUNDARIES OF THE LAND TO BE SUBDIVIDED AS SHOWN ON THIS PLAN, AND THEIR RELATIONSHIP TO THE ADJACENT LAND ARE ACCURATELY AND CORRECTLY SHOWN.

\_\_\_\_\_  
 SIGNATURE DATE

**ADDITIONAL INFORMATION REQUIRED UNDER SECTION 51(17) OF THE PLANNING ACT**  
 INFORMATION REQUIRED BY CLAUSES A, B, C, D, E, F, G, AND J ARE SHOWN ON THE PLAN OF SUBDIVISION AND KEY PLAN

I. SILTY SAND  
 H & K. ALL MUNICIPAL SERVICES REQUIRED  
 L. EASEMENT RELATED TO ONTARIO HYDRO TRANSMISSION AND DISTRIBUTION

**OWNER'S AUTHORIZATION**  
 WE, \_\_\_\_\_  
 BEING THE REGISTERED OWNER(S) OF THE  
 SUBJECT LANDS HEREBY AUTHORIZE \_\_\_\_\_  
 TO PREPARE AND SUBMIT THIS DRAFT PLAN OF  
 SUBDIVISION FOR APPROVAL.

\_\_\_\_\_  
 SIGNATURE DATE

02	Issued For Review	2025/11/26
01	Issued For Review	2024/09/28
No.	Revision	Date

Client Name: \_\_\_\_\_

Drawing Title: \_\_\_\_\_

**DRAFT PLAN OF SUBDIVISION**

Project: \_\_\_\_\_

**1191 COUNTY ROAD 42  
 STAYNER, ON  
 (TOWN OF CLEARVIEW)**

Scale: 1:700  
 Drawn by: HL  
 Checked by: RP  
 Project No.: \_\_\_\_\_  
 Date: \_\_\_\_\_  
 Drawing No.: **DP**