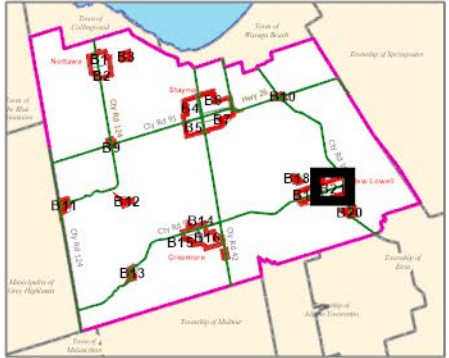
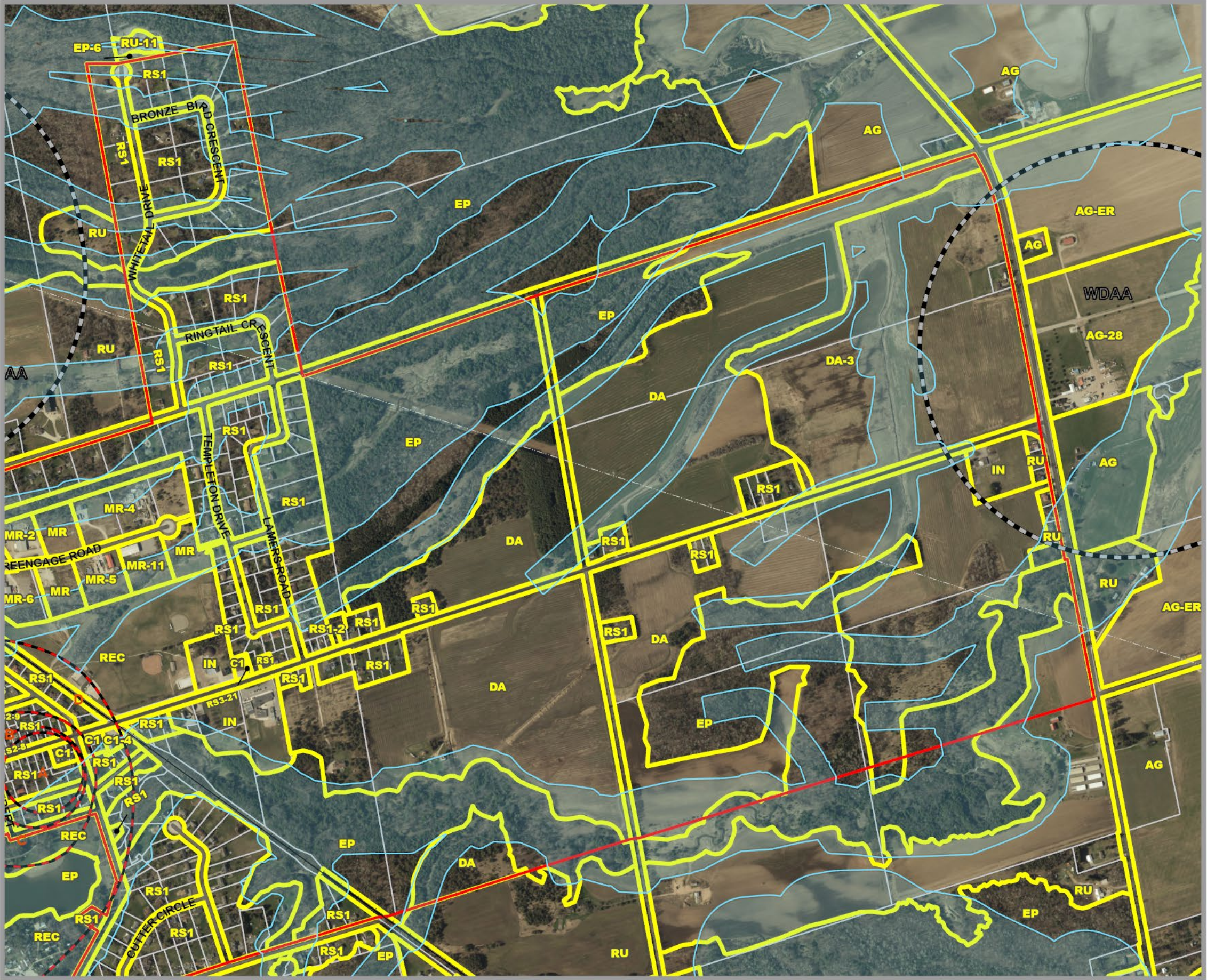


CLEARVIEW TOWNSHIP
COMPREHENSIVE ZONING BY-LAW

Schedule B21 East New Lowell



- AGRICULTURAL**
AG AGRICULTURAL
AGC AGRICULTURALLY RELATED COMMERCIAL
AG-EL AGRICULTURAL LIVESTOCK USE EXCEPTION
AG-ER AGRICULTURAL RESIDENTIAL USE EXCEPTION
AGI AGRICULTURALLY RELATED INDUSTRIAL
AGK AGRICULTURAL KENNEL

COMMERCIAL
C1 COMMERCIAL GENERAL
C2 COMMERCIAL HIGHWAY
C3 COMMERCIAL SERVICE
C4 COMMERCIAL LARGE FORMAT
C5 COMMERCIAL NEIGHBOURHOOD
C6 COMMERCIAL COUNTRY
CT1 COMMERCIAL TRANSITION 1
CT2 COMMERCIAL TRANSITION 2
RECC COMMERCIAL RECREATION LANDS

ENVIRONMENTAL
EP ENVIRONMENTAL PROTECTION

DEVELOPMENT AREA
DA DEVELOPMENT AREA

INSTITUTIONAL
IN INSTITUTIONAL
INR1 INSTITUTIONAL RESIDENTIAL 1
INR2 INSTITUTIONAL RESIDENTIAL 2
- INDUSTRIAL**
MA INDUSTRIAL AIRPORT
MG INDUSTRIAL GENERAL
MP INDUSTRIAL PRESTIGE
MR INDUSTRIAL RESTRICTED
MW INDUSTRIAL WASTE DISPOSAL

NIAGARA ESCARPMENT
NEC NIAGARA ESCARPMENT COMMISSION

RECREATION
REC RECREATION LANDS
RECT RECREATIONAL TRAIL

RESIDENTIAL
RE RESIDENTIAL ESTATE
RS RESIDENTIAL HAMLET
RS1 RESIDENTIAL LARGE LOT
RS2 RESIDENTIAL LOW DENSITY
RS3 RESIDENTIAL MULTIPLE LOW DENSITY
RS4 RESIDENTIAL MEDIUM DENSITY
RS5 RESIDENTIAL MULTIPLE MEDIUM DENSITY
RS6 RESIDENTIAL HIGH DENSITY
RSBB SETTLEMENT AREA B&B

RURAL
RU RURAL
RUK RURAL KENNEL

- Settlement Area Boundary

Commercial Transition 1 Area

FP Hazard Land Area

FPSP Hazard Land Special Policy

MARA Mineral Aggregate Resource Area

WDAA Waste Disposal Assessment Area

WHPA Well Head Protection Area
- Subject to Appeal Before OMB

Niagara Escarpment Boundary

Zone Boundary

Parcel Boundary

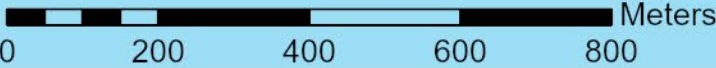
Utility Line

Railway

Abandoned Railway

By-Law 06-54
As Approved by Council, October 23, 2006
Fran Sainsbury
Fran Sainsbury, Mayor
Robert Campbell
Robert Campbell, Clerk

Scale:1:10,000



Consolidated: August 18, 2025

Note: All the elements in the legend may not appear on the map.
SCHEDULE B21 East New Lowell.PDF