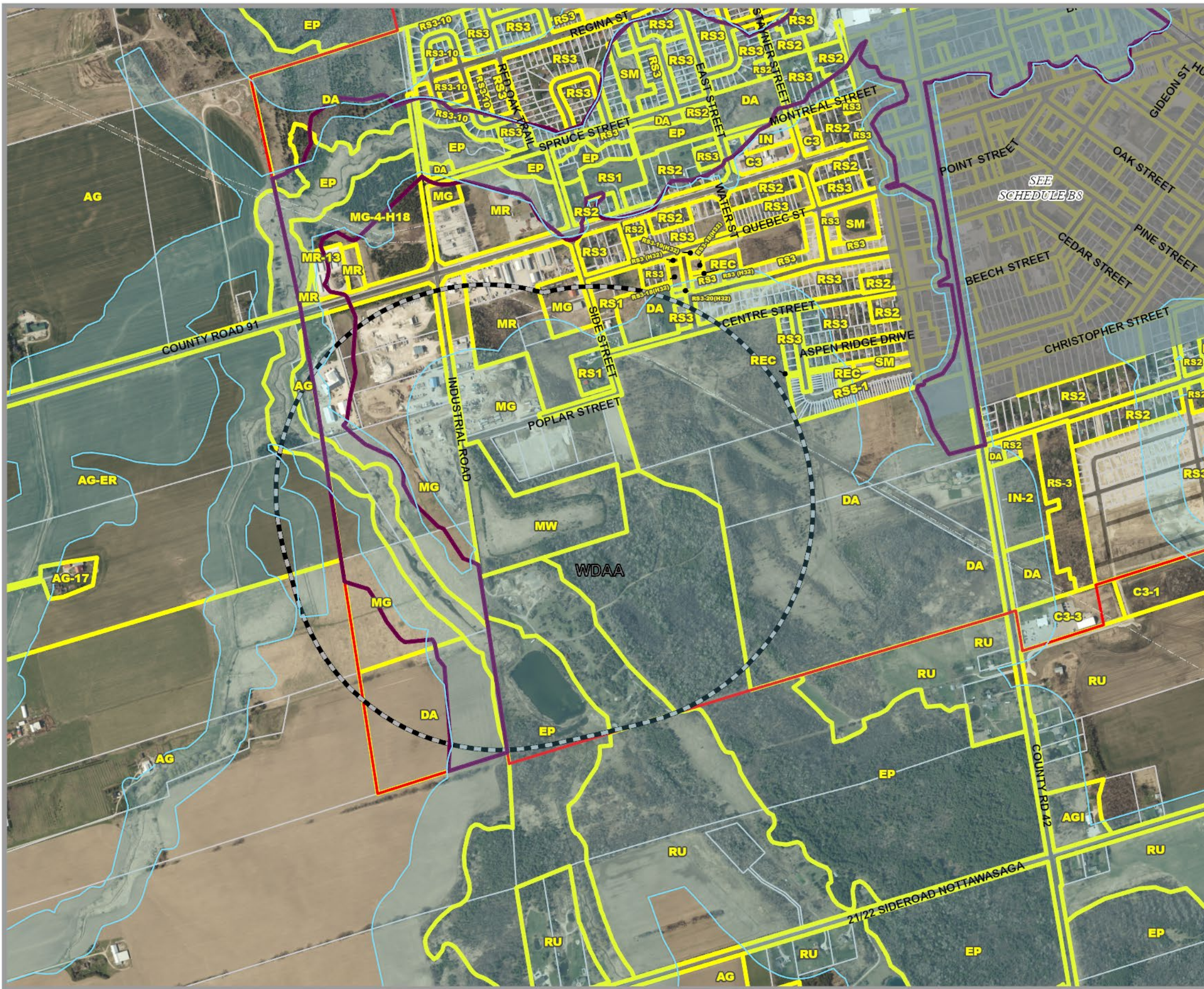
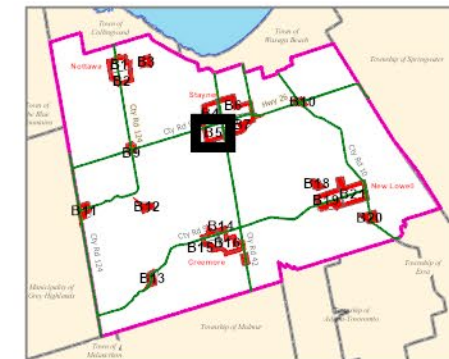


CLEARVIEW TOWNSHIP COMPREHENSIVE ZONING BY-LAW

Schedule B5 South West Stayner

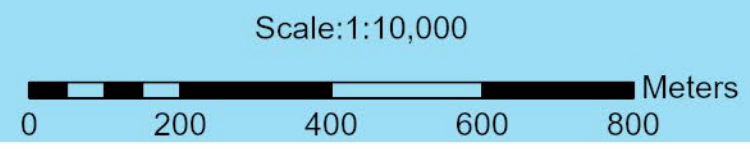


- | | |
|---|--|
| <p>AGRICULTURAL
 AG AGRICULTURAL
 AGC AGRICULTURALLY RELATED COMMERCIAL
 AG-EL AGRICULTURAL LIVESTOCK USE EXCEPTION
 AG-ER AGRICULTURAL RESIDENTIAL USE EXCEPTION
 AGI AGRICULTURALLY RELATED INDUSTRIAL
 AGK AGRICULTURAL KENNEL</p> | <p>INDUSTRIAL
 MA INDUSTRIAL AIRPORT
 MG INDUSTRIAL GENERAL
 MP INDUSTRIAL PRESTIGE
 MR INDUSTRIAL RESTRICTED
 MW INDUSTRIAL WASTE DISPOSAL</p> |
| <p>COMMERCIAL
 C1 COMMERCIAL GENERAL
 C2 COMMERCIAL HIGHWAY
 C3 COMMERCIAL SERVICE
 C4 COMMERCIAL LARGE FORMAT
 C5 COMMERCIAL NEIGHBOURHOOD
 C6 COMMERCIAL COUNTRY
 CT1 COMMERCIAL TRANSITION 1
 CT2 COMMERCIAL TRANSITION 2
 RECC COMMERCIAL RECREATION LANDS</p> | <p>NIAGARA ESCARPMENT
 NEC NIAGARA ESCARPMENT COMMISSION</p> |
| <p>ENVIRONMENTAL
 EP ENVIRONMENTAL PROTECTION</p> | <p>RECREATION
 REC RECREATION LANDS
 RECT RECREATIONAL TRAIL</p> |
| <p>DEVELOPMENT AREA
 DA DEVELOPMENT AREA</p> | <p>RESIDENTIAL
 RE RESIDENTIAL ESTATE
 RS RESIDENTIAL HAMLET
 RS1 RESIDENTIAL LARGE LOT
 RS2 RESIDENTIAL LOW DENSITY
 RS3 RESIDENTIAL MULTIPLE LOW DENSITY
 RS4 RESIDENTIAL MEDIUM DENSITY
 RS5 RESIDENTIAL MULTIPLE MEDIUM DENSITY
 RS6 RESIDENTIAL HIGH DENSITY
 RSBB SETTLEMENT AREA B&B</p> |
| <p>INSTITUTIONAL
 IN INSTITUTIONAL
 INR1 INSTITUTIONAL RESIDENTIAL 1
 INR2 INSTITUTIONAL RESIDENTIAL 2</p> | <p>RURAL
 RU RURAL
 RUK RURAL KENNEL</p> |

- | | |
|--|---|
| <p>Red dashed line: Settlement Area Boundary</p> <p>Pink dashed line: Commercial Transition 1 Area</p> <p>Blue dashed line: FP Hazard Land Area</p> <p>Purple dashed line: FPSP Hazard Land Special Policy</p> <p>Black dashed line: MARA Mineral Aggregate Resource Area</p> <p>Black dashed line: WDAA Waste Disposal Assessment Area</p> <p>Red dashed line: WHPA Well Head Protection Area</p> | <p>Black dashed line: Subject to Appeal Before OMB</p> <p>Green dashed line: Niagara Escarpment Boundary</p> <p>Yellow dashed line: Zone Boundary</p> <p>White dashed line: Parcel Boundary</p> <p>Grey dashed line: Utility Line</p> <p>Black dashed line: Railway</p> <p>Black dashed line: Abandoned Railway</p> |
|--|---|

By-Law 06-54
 As Approved by Council, October 23, 2006
Fran Sainsbury
 Fran Sainsbury, Mayor
Robert Campbell
 Robert Campbell, Clerk

This map, either in whole or in part, may not be reproduced without the written authority from the County of Simcoe.
 Copyright © County of Simcoe
 Land Information Network Cooperative - LINC 2014
 Produced (in part) under license from: the Cities of Barrie & Orillia, the Ontario Ministry of Natural Resources (Copyright - Queens Printer 2014), C/Versant Enterprises Inc. and its suppliers all rights reserved, and Members of the Ontario Geospatial Data Exchange.
 THIS IS NOT A PLAN OF SURVEY
 For information call 1-800-736-9300 or visit www.simcoe.ca



Consolidated: May 6, 2024

Note: All the elements in the legend may not appear on the map.
 SCHEDULE B5 South West Stayner.PDF