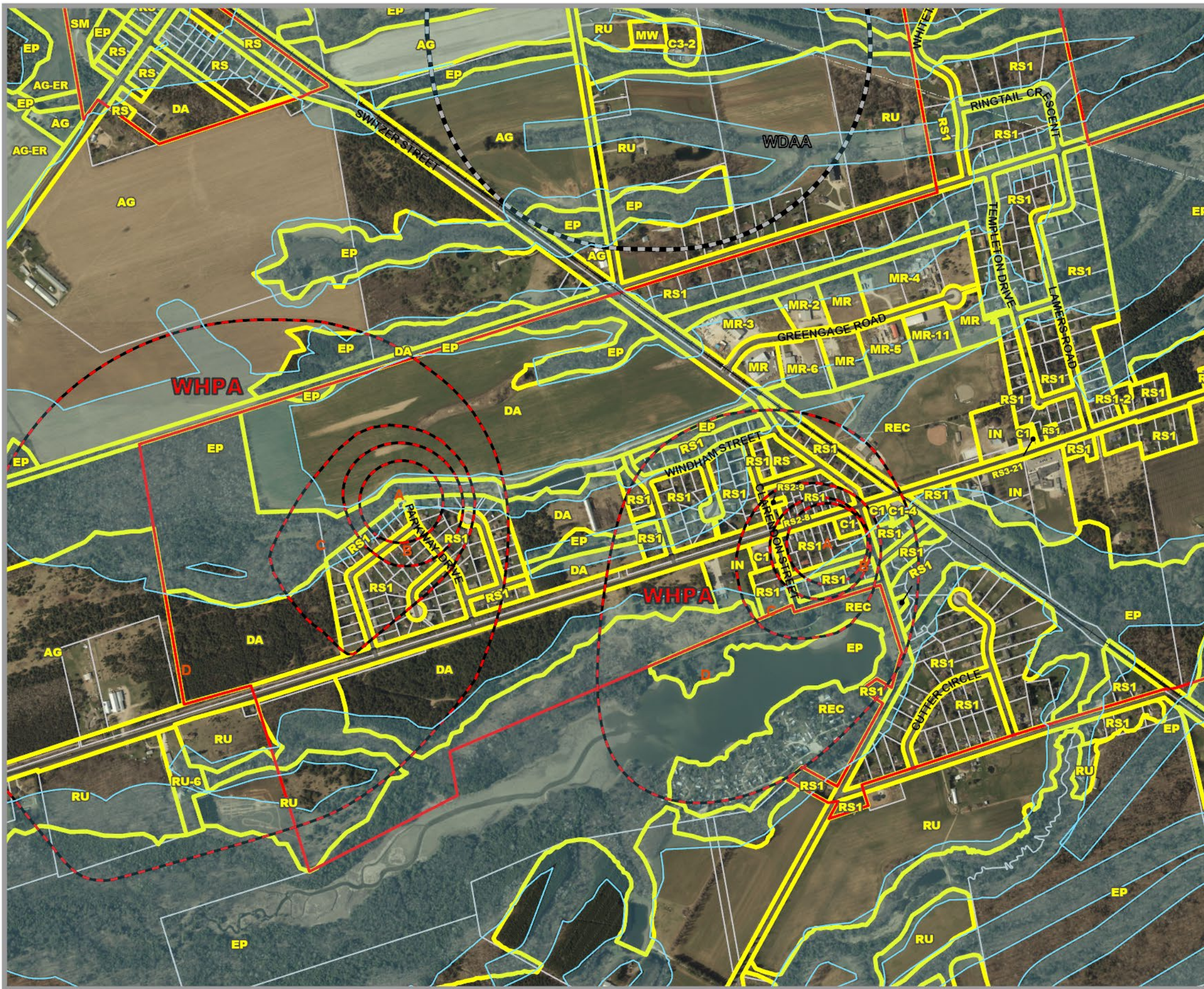
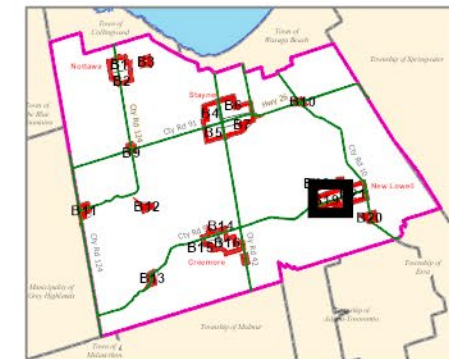


CLEARVIEW TOWNSHIP COMPREHENSIVE ZONING BY-LAW

Schedule B19 West New Lowell



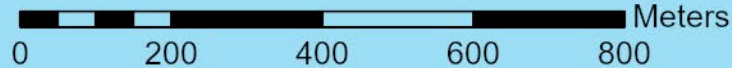
- | | |
|---------------------------------------------------------------------------------------------------------------------------------------------------------------------------------------------------------------------------------------------------------------------------------------------------------------|------------------------------------------------------------------------------------------------------------------------------------------------------------------------------------------------------------------------------------------------------------------------------------------------------------------------------------------------|
| <p>AGRICULTURAL
 AG AGRICULTURAL
 AGC AGRICULTURALLY RELATED COMMERCIAL
 AG-EL AGRICULTURAL LIVESTOCK USE EXCEPTION
 AG-ER AGRICULTURAL RESIDENTIAL USE EXCEPTION
 AGI AGRICULTURALLY RELATED INDUSTRIAL
 AGK AGRICULTURAL KENNEL</p> | <p>INDUSTRIAL
 MA INDUSTRIAL AIRPORT
 MG INDUSTRIAL GENERAL
 MP INDUSTRIAL PRESTIGE
 MR INDUSTRIAL RESTRICTED
 MW INDUSTRIAL WASTE DISPOSAL</p> |
| <p>COMMERCIAL
 C1 COMMERCIAL GENERAL
 C2 COMMERCIAL HIGHWAY
 C3 COMMERCIAL SERVICE
 C4 COMMERCIAL LARGE FORMAT
 C5 COMMERCIAL NEIGHBOURHOOD
 C6 COMMERCIAL COUNTRY
 CT1 COMMERCIAL TRANSITION 1
 CT2 COMMERCIAL TRANSITION 2
 RECC COMMERCIAL RECREATION LANDS</p> | <p>NIAGARA ESCARPMENT
 NEC NIAGARA ESCARPMENT COMMISSION</p> |
| <p>ENVIRONMENTAL
 EP ENVIRONMENTAL PROTECTION</p> | <p>RECREATION
 REC RECREATION LANDS
 RECT RECREATIONAL TRAIL</p> |
| <p>DEVELOPMENT AREA
 DA DEVELOPMENT AREA</p> | <p>RESIDENTIAL
 RE RESIDENTIAL ESTATE
 RS RESIDENTIAL HAMLET
 RS1 RESIDENTIAL LARGE LOT
 RS2 RESIDENTIAL LOW DENSITY
 RS3 RESIDENTIAL MULTIPLE LOW DENSITY
 RS4 RESIDENTIAL MEDIUM DENSITY
 RS5 RESIDENTIAL MULTIPLE MEDIUM DENSITY
 RS6 RESIDENTIAL HIGH DENSITY
 RSBB SETTLEMENT AREA B&B</p> |
| <p>INSTITUTIONAL
 IN INSTITUTIONAL
 INR1 INSTITUTIONAL RESIDENTIAL 1
 INR2 INSTITUTIONAL RESIDENTIAL 2</p> | <p>RURAL
 RU RURAL
 RUK RURAL KENNEL</p> |

- | | |
|--------------------------------------|------------------------------|
| Settlement Area Boundary | Subject to Appeal Before OMB |
| Commercial Transition 1 Area | Niagara Escarpment Boundary |
| FP Hazard Land Area | Zone Boundary |
| FPSP Hazard Land Special Policy | Parcel Boundary |
| MARA Mineral Aggregate Resource Area | Utility Line |
| WDAA Waste Disposal Assessment Area | Railway |
| WHPA Well Head Protection Area | Abandoned Railway |

By-Law 06-54
As Approved by Council, October 23, 2006
Fran Sainsbury
Fran Sainsbury, Mayor
Robert Campbell
Robert Campbell, Clerk

This map, either in whole or in part, may not be reproduced without the written authority from the County of Simcoe.
Copyright © County of Simcoe
Land Information Network Cooperative - LINC 2014
Produced (in part) under license from: the Cities of Barrie & Orillia, the Ontario Ministry of Natural Resources (Copyright - Queens Printer 2014), C/Venart Enterprises Inc. and its suppliers all rights reserved, and Members of the Ontario Geospatial Data Exchange.
THIS IS NOT A PLAN OF SURVEY
For information call (705) 734-9300 or visit www.simcoe.ca

Scale:1:10,000



Consolidated: March 4, 2024

Note: All the elements in the legend may not appear on the map.
SCHEDULE B19 West New Lowell.PDF