



CLEARVIEW

Public Meeting

Telecommunication Tower

2019-027

The Proposal

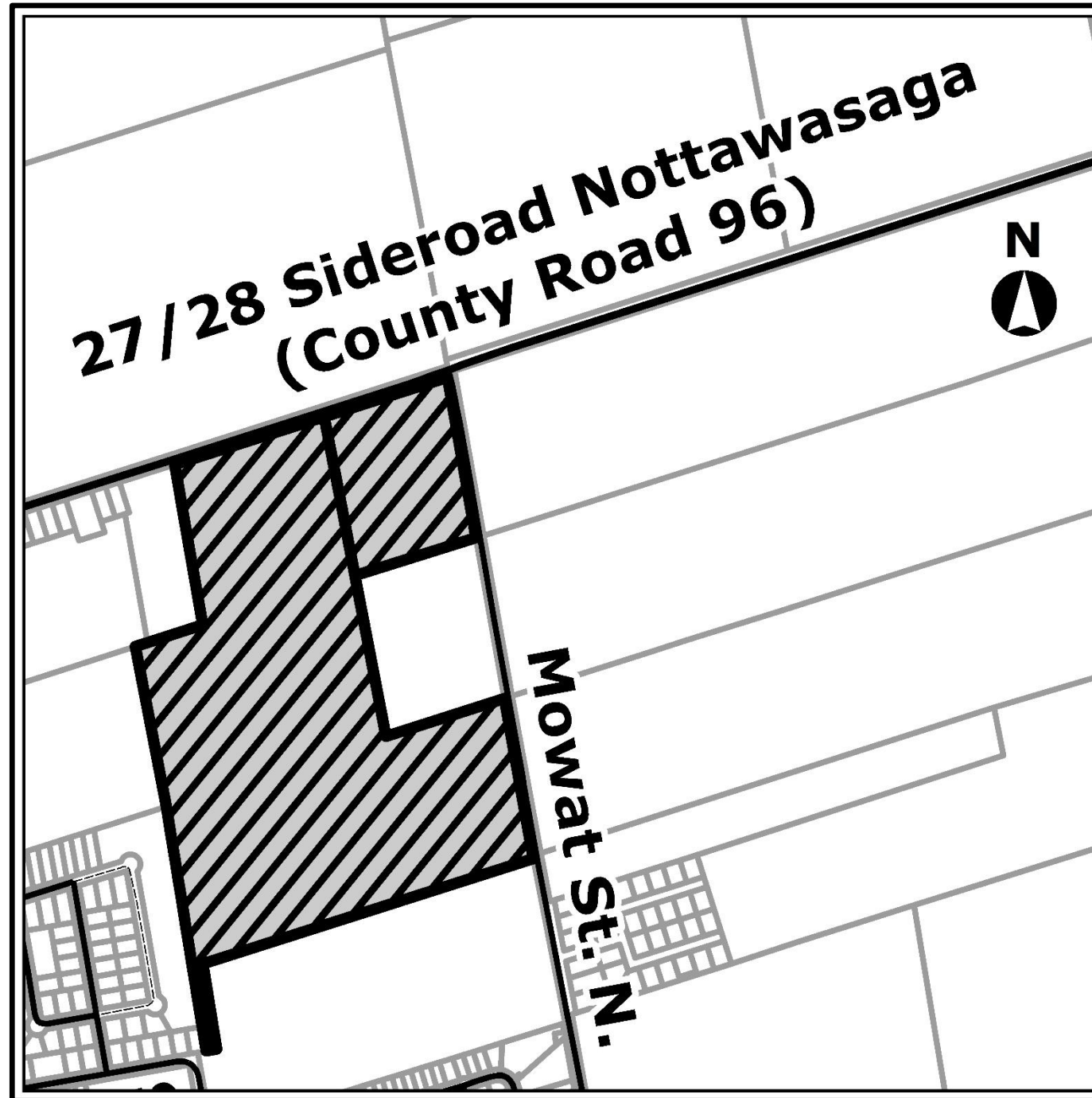
- Signum Wireless is proposing to install a 60m lattice tower tri-pole multi-carrier telecommunication tower.
- Proposed tower location will be at Township of Clearview, Public Works Facility located on the 27/28 Sideroad.
- Tower location will be approximately 36m from 27/28 Sideroad, 82m from Mowat Street North and 264m from the rear property line.
- Radio Shelter will be approximately 29m from 27/28 Sideroad, 77m from Mowat Street North and 269m from the rear property line.

Subject Lands

5825 27/28 Sideroad
Nottawasaga

and

5833 Mowat Street
Stayner



Airphoto of the Site



Photo Renderings



Before



After

Existing Policy Framework







- Current Township of Clearview Official Plan Designation:
 - Rural (RU), Greenland – Hazard Land, and Open Space

Current Zoning By-law Categories:

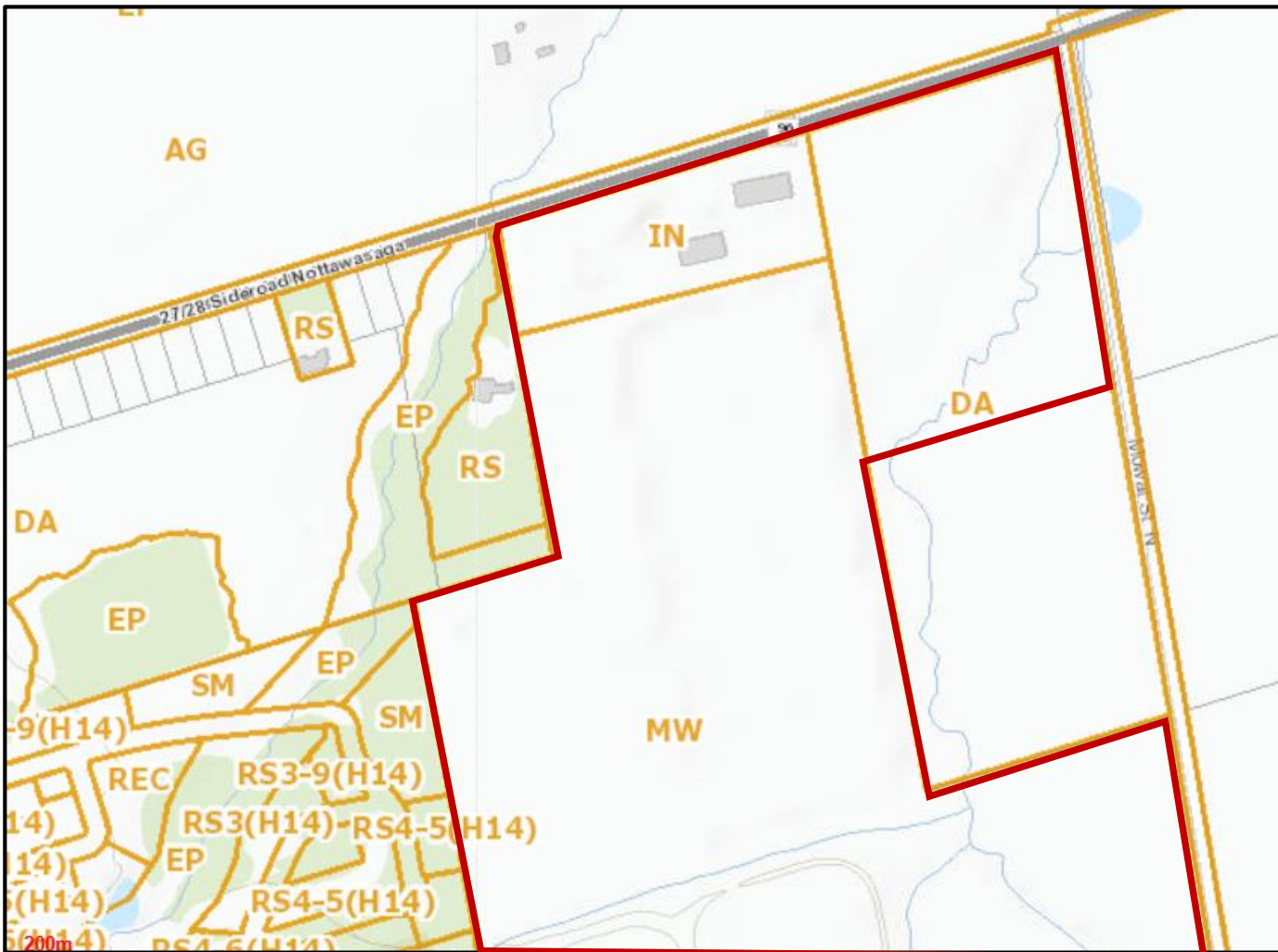
- Institutional (IN), Development Area (DA), Waste Disposal Industrial (MW), Hazard Land Overlay (FP)

Existing Official Plan Map



-  Residential
-  Future Development
-  Open Space
-  Greenland – Hazard Land Areas
-  Rural
-  Outline Subject Lands

Existing Zoning By-law Map



- Residential Hamlet (RS)
- Residential Multiple Low Density ((RS3-9 (H14))
- Residential Medium Density ((RS4-5(H14)
- Institutional (IN)
- Development Area (DA)
- Environmental Protection (EP)
- Recreation Lands (REC)
- Stormwater Management Facilities (SM)
- Waste Disposal Industrial (MW)
- Agricultural (AG)

— Outline Subject Lands



Notice and Circulation

- Notice of the Public Meeting for Telecommunication Tower has been given in accordance with the Township Telecommunication Protocol.

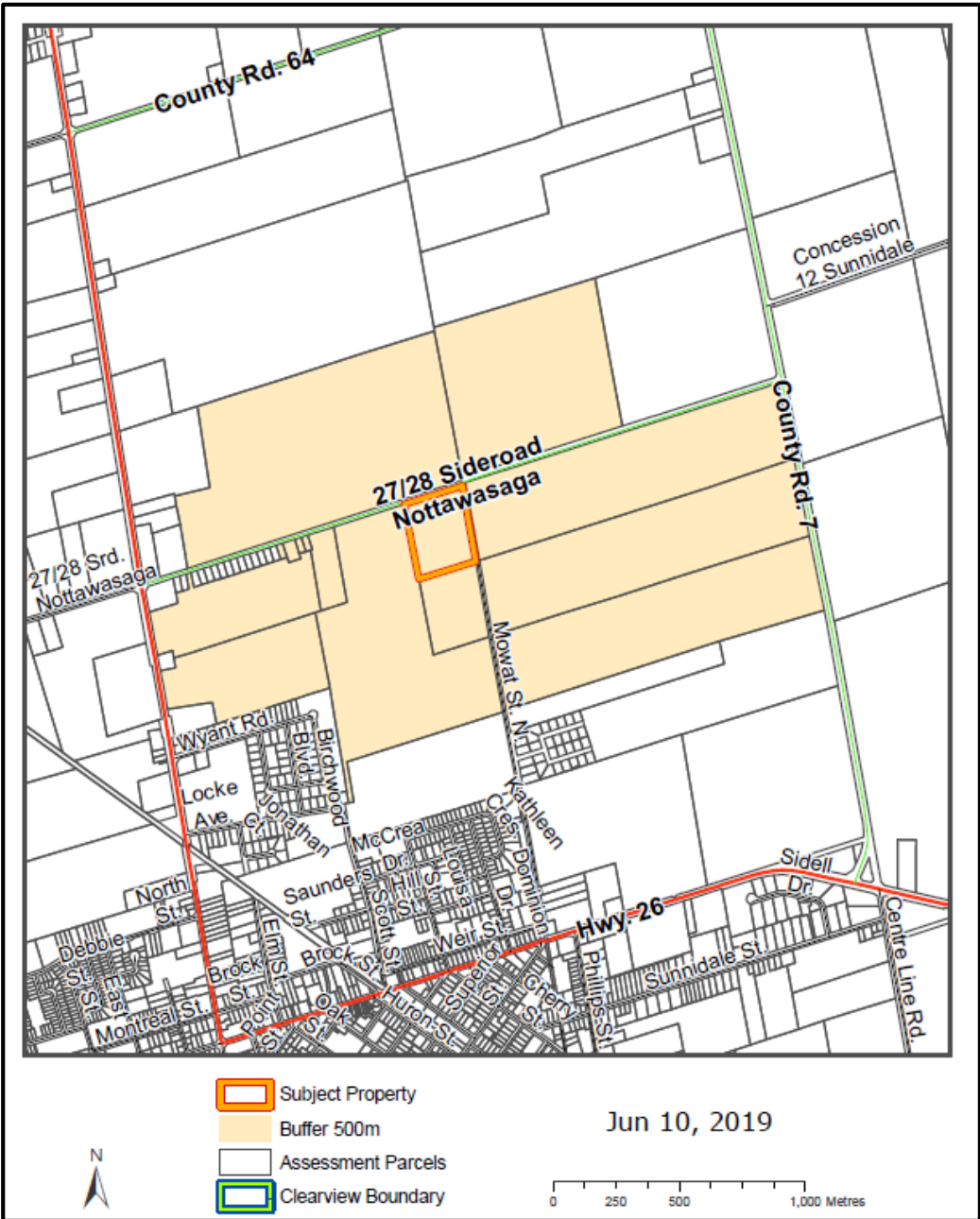
When: June 20, 2019

How: Mailing (mailing to all properties within 500m) & Published in the Newspaper

- Details of the application and supporting materials:
 - Have been made available to the public; and
 - Have been circulated to the relevant commenting agencies.

Circulation Map

Properties located within 500 m of the subject lands.





How to get Involved

- Signum Wireless invites comments or inquires about this proposal by mail, electronic mail or fax
- Comments should be received by 5:00pm July 22, 2019
- Comments can be made to Township Staff, FONTRU International Inc., and Industry Canada



Signum Contact

- FONTRU International Inc. – Attn. Dylan Goldman
- Email: ON1072.signum.info@fonturinternational.com
- 70 East Beaver Creek Road, Suite 22
- Richmond Hill, ON L4B 3B2



Industry Canada Contact

- Attention: Tower Issue – 5825 Nottawasaga 27/28 Sideroad, Clearview – ON1072
- Southwestern Ontario District Office, 4475 North Service Road, Suite 100, Burlington, ON L7L 4X7
- Telephone: 1-855-465-6307
- Email: ic.spectrumswodo-spectredbsoo.ic@canada.ca



Contact Information

- Planner: Rossalyn Workman
- Email: rworkman@clearview.ca
- Phone: 705-428-6230 x248

The Review Process

