



Exterior Perspective 1

SCALE:



Exterior Perspective 2

SCALE:

Allan Avis architects

60 West Street
Goderich, ON N7A 2K3

www.AllanAvisArchitects.com

T 519 524 5313
F 519 524 5253

Clearview Township

Sunnidale Corners Community Centre
Addition and Renovation

12391 County Road 10
Stayner, Ontario

DESIGNED BY
JM

DRAWN BY
JM

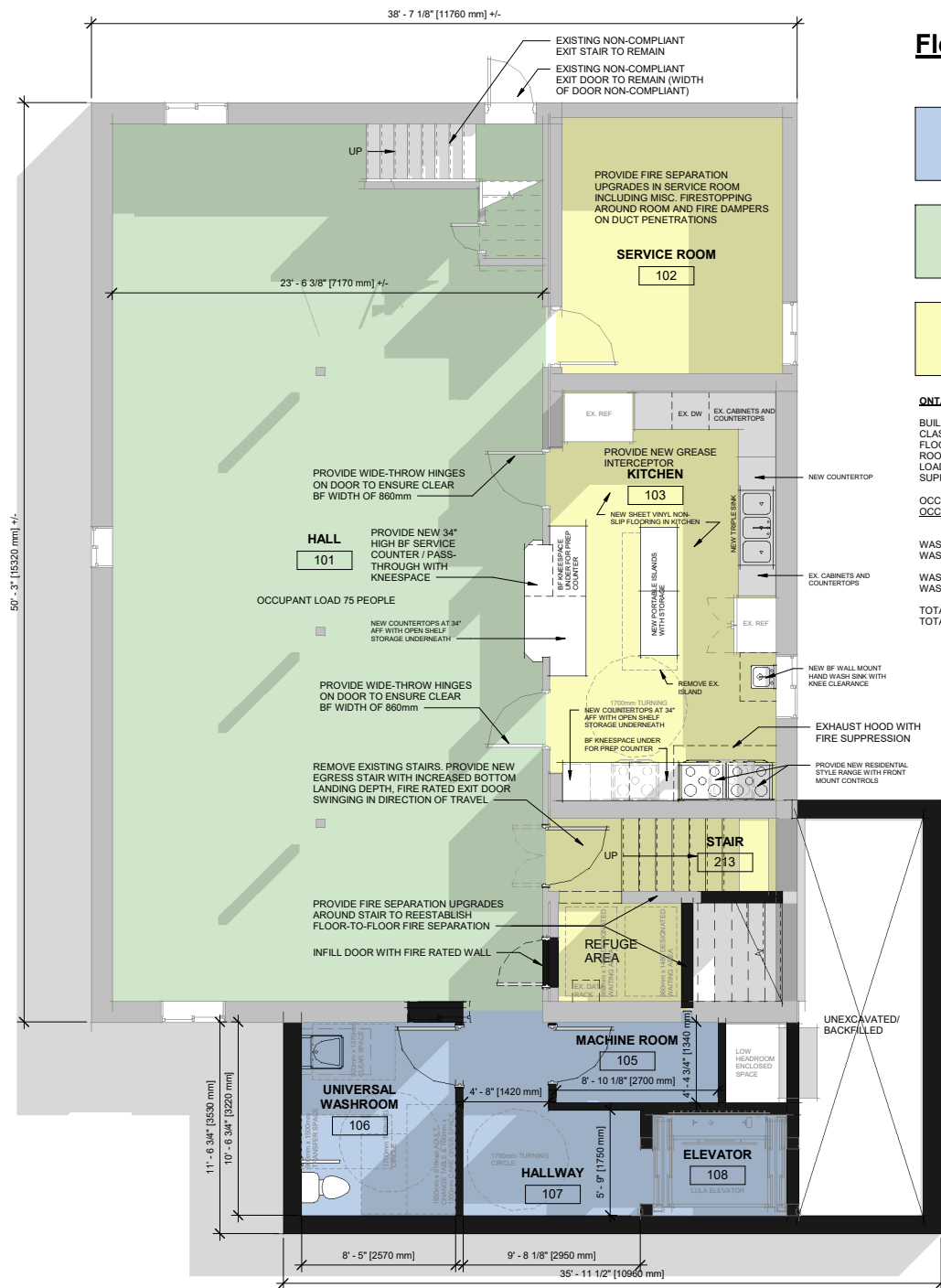
JOB NO.
2049.00

SHEET
Exterior Perspectives

PROJECT STATUS
Schematic Design

ISSUE DATE
June 30, 2022

SK2



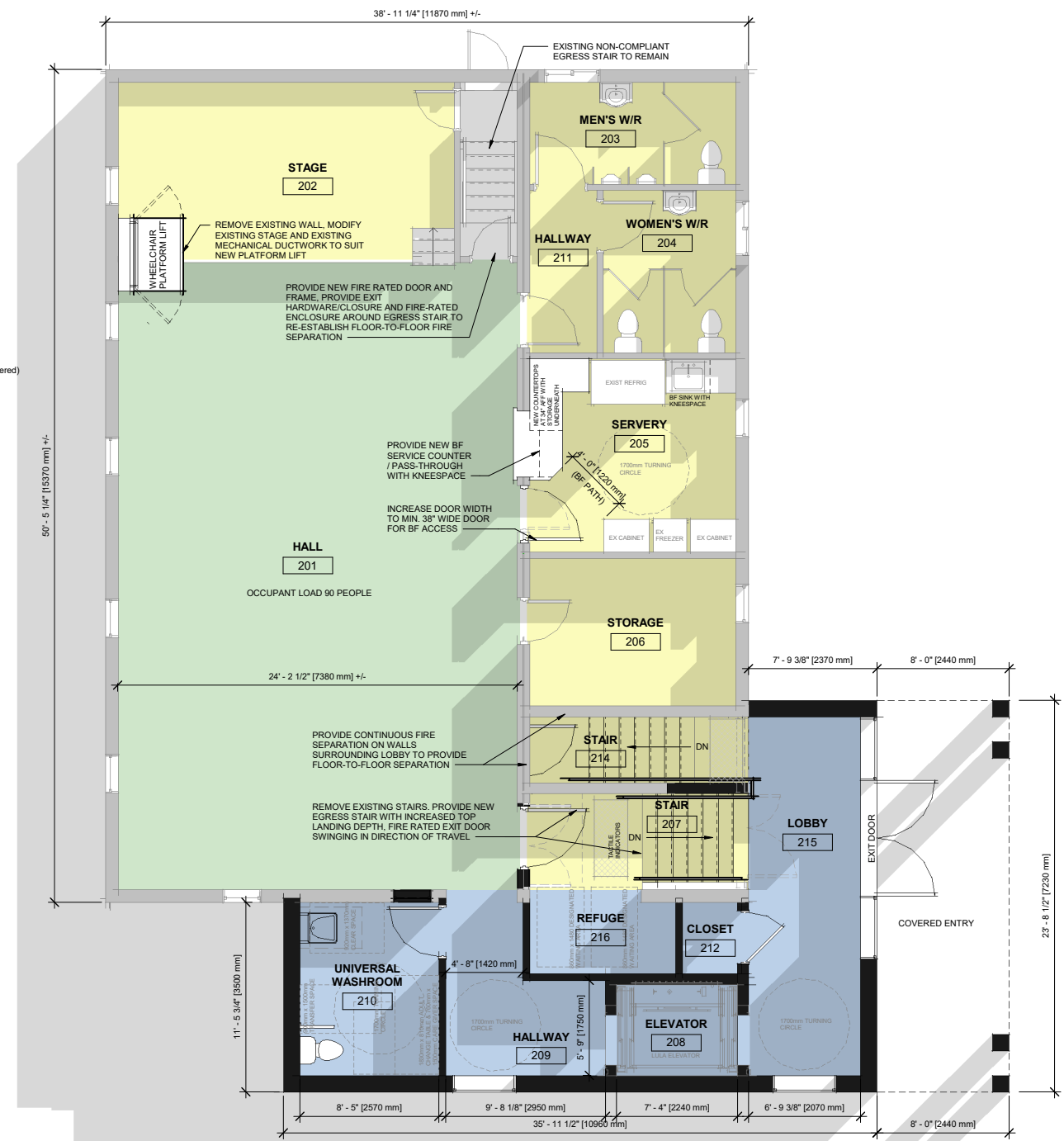
3 BASEMENT PLAN
SCALE 1/4" = 1'-0"

Floor Plan Legend

- Addition
- Existing Hall
- Support Spaces

ONTARIO BUILDING CODE INFORMATION

BUILDING AREA	= 2,471 SF (229 m ²)
CLASSIFICATION	= 3.2.2.25, Group A, Division 2, up to 2 Storeys (non-sprinklered)
FLOOR ASSEMBLY RATING	= 45 min.
ROOF ASSEMBLY RATING	= 45 min.
LOADBEARING ELEMENTS SUPPORTING RATED ASSEMBLY	= 45 min. (OR BE NON-COMBUSTIBLE)
OCCUPANT LOAD LOWER LEVEL	= 75 PEOPLE
OCCUPANT LOAD UPPER FLOOR	= 90 PEOPLE
TOTAL	= 165 PEOPLE
WASHROOMS REQUIRED GROUND	= 1 MALE, 2 FEMALE
WASHROOMS PROVIDED GROUND	= 1 UNIVERSAL WASHROOM
WASHROOMS REQUIRED UPPER	= 1 MALE, 2 FEMALE
WASHROOMS PROVIDED UPPER	= 3 MALE, 2 FEMALE, 1 UNIVERSAL WASHROOM
TOTAL WATER CLOSETS REQUIRED	= 2 MALE, 4 FEMALE
TOTAL WATER CLOSETS PROVIDED	= 3 MALE, 2 FEMALE, 2 UNIVERSAL WASHROOMS



2 FIRST FLOOR PLAN
SCALE 1/4" = 1'-0"