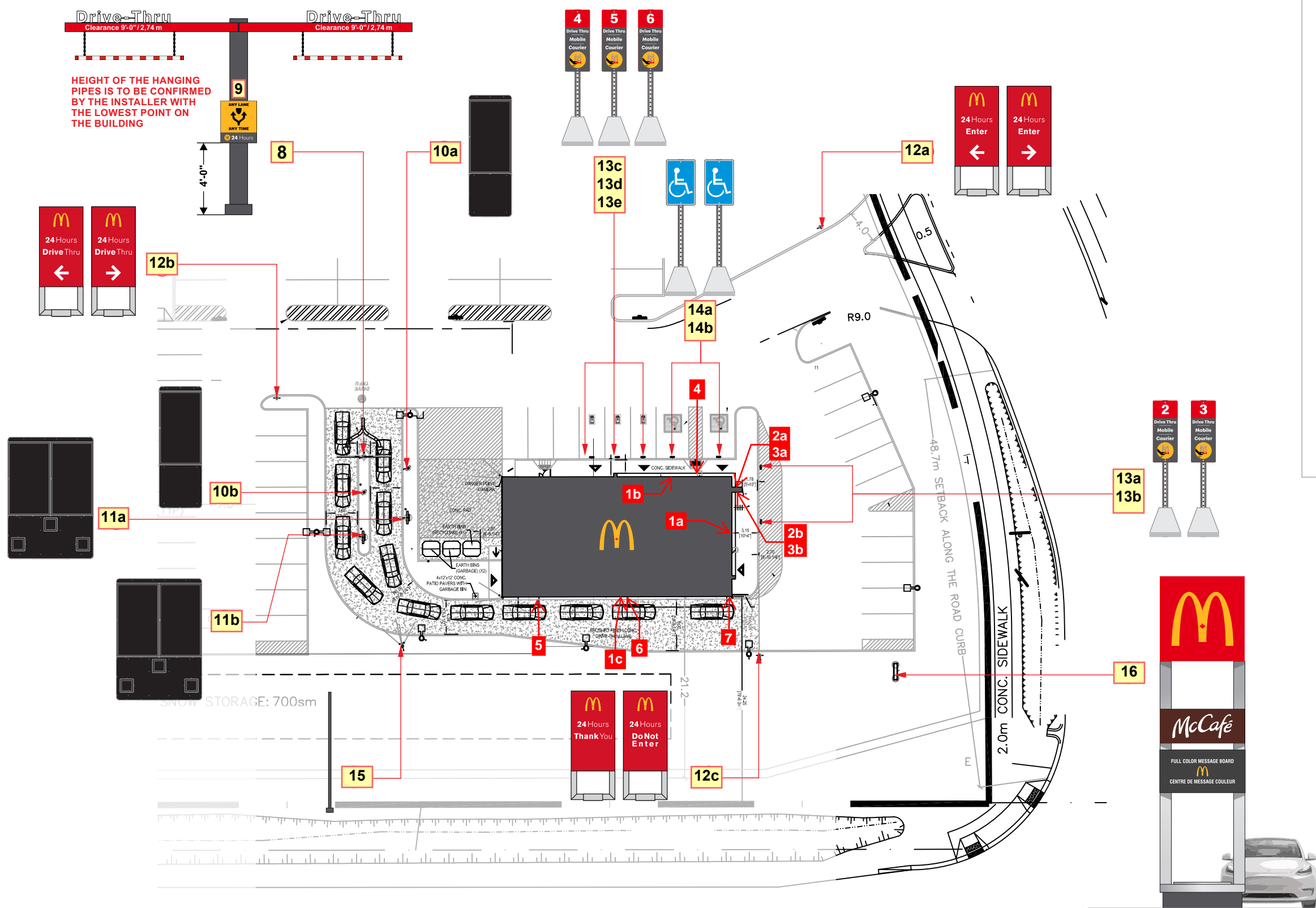


Site Plan



- | # | Description |
|----|---|
| 1. | Non-illuminated 2-Lane VHD with Swing Arms see MCDO0CS3XX0011 and Illuminated ALAT/24H Appendage Sign see MCDO0SF4P30053
Sign Area: 4.67 Ft ² - 0.43 M ² (appendage) |
| 2. | Digital Presell Board MCDO0ME4E30001 supplied and installed by Pattison ID
Sign Area: 16.38 Ft ² - 1.52 M ² |
| 3. | Digital Menu Board MCDO0ME4E30003 supplied and installed by Pattison ID
Sign Area: 33.22 Ft ² - 3.09 M ² |
| 4. | Illuminated Directional Sign see MCDO0DR4B30003
Sign Area: 7.32 Ft ² - 0.68 M ² |
| 5. | NP6 Camera Post see MCDO0ST3XX0022
LOCATION T.B.C.BY GC PRIOR TO POURING BASES/INSTALL |
| 6. | Reserved Parking Signs MCDO0SFXAX0072 with Omega Post & Concrete Block MCDO0AS4XX0050
Sign Area: 2.50 Ft ² - 0.23 M ² |
| 7. | S/F Accessible Parking Sign see MCDO0SFXAX0028 with Omega Post & Concrete Block MCDO0AS4XX0050
Sign Area: 2.14 Ft ² - 0.20 M ² |
| 8. | D/F illuminated Road Sign see page 5
Sign Area: 74.50 Ft ² - 6.92 M ² |

Project ID
AM6-94410C

McDonald's # 41511
Hwy 26 & Grand Trunk Rd
Stayner, ON

Sign Item

Date: 01-22-2025
Scale: 3/32"=1'-0"
Contact: Aurela Michaud
Designer: Claudia Vogt

Revision Note

Text box

Information Required for Production

Text box

Customer Approval

Signature

MM/DD/YYYY

All rights reserved. The artwork depicted herein are copyrighted and are the exclusive property of Pattison ID and as such cannot be reproduced and/or distributed, in whole or in part, without written permission of Pattison ID.

It is the Customer's responsibility to ensure that the sign installation location is suitable to accept and support the installation of the signs being ordered. Notify Pattison ID immediately if further details are required.

THE KINGS HWY NO. 26

NOTE: TECHNICAL SURVEY HAS NOT BEEN PERFORMED. DIMENSIONS MUST BE VERIFIED PRIOR TO PRODUCTION.

Pattison



1.866.635.1110
pattisonid.com

Overall site plan

Description

1. Replacement faces for multi-tenant pylon sign see page 7

Project ID
AM6-94410C

McDonald's # 41511
Hwy 26 & Grand Trunk Rd
Stayner, ON

Sign Item

Date: 01-22-2025
Scale: n.t.s.
Contact: Aurela Michaud
Designer: Claudia Vogt

Revision Note

R1 (CV) - 03.05.2025
- added page

Information Required
for Production

Text box

Customer Approval

Signature

MM/DD/YYYY

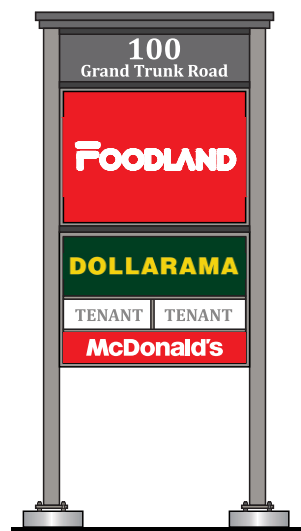
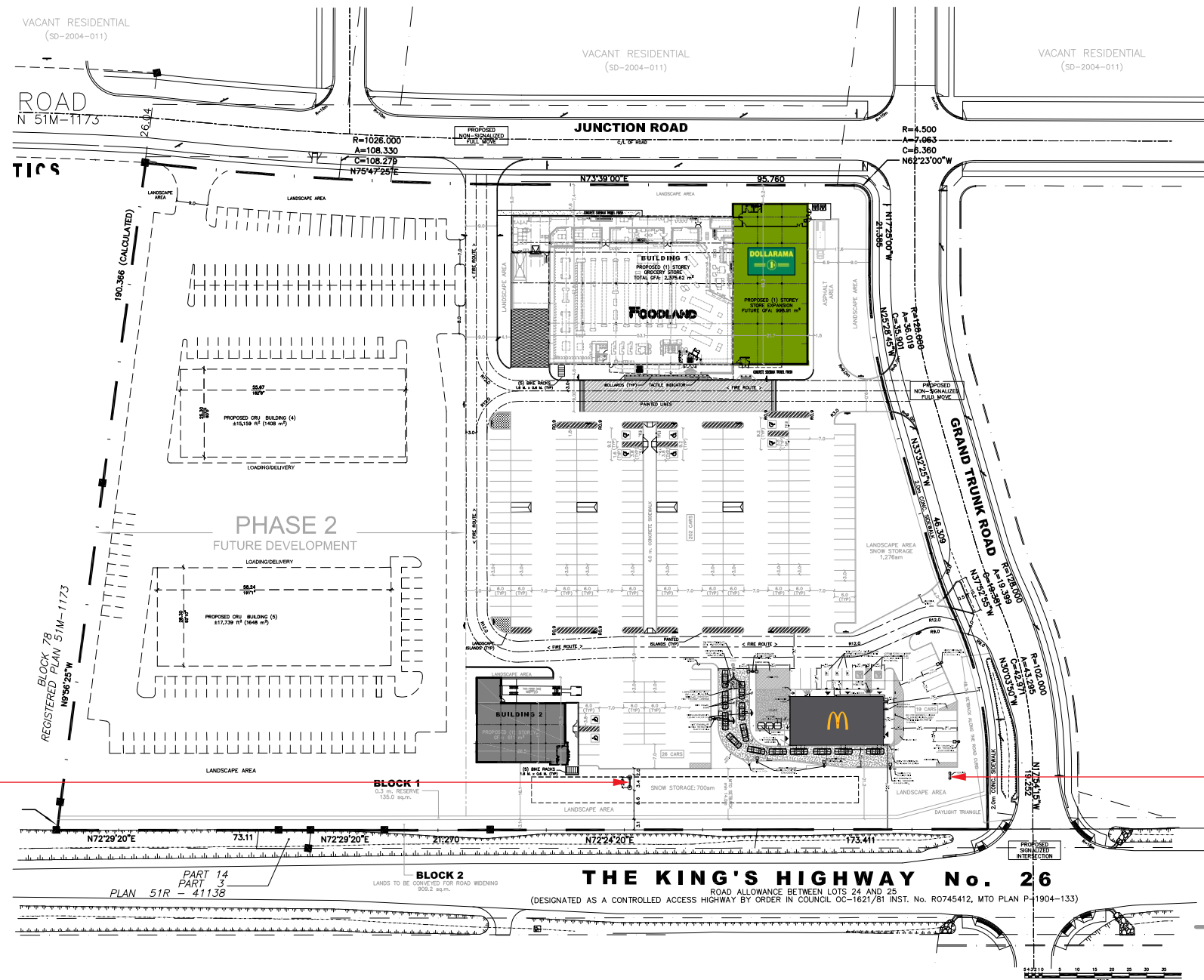
All rights reserved. The artwork depicted herein are copyrighted and are the exclusive property of Pattison ID and as such cannot be reproduced and/or distributed, in whole or in part, without written permission of Pattison ID.

It is the Customer's responsibility to ensure that the sign installation location is suitable to accept and support the installation of the signs being ordered. Notify Pattison ID immediately if further details are required.

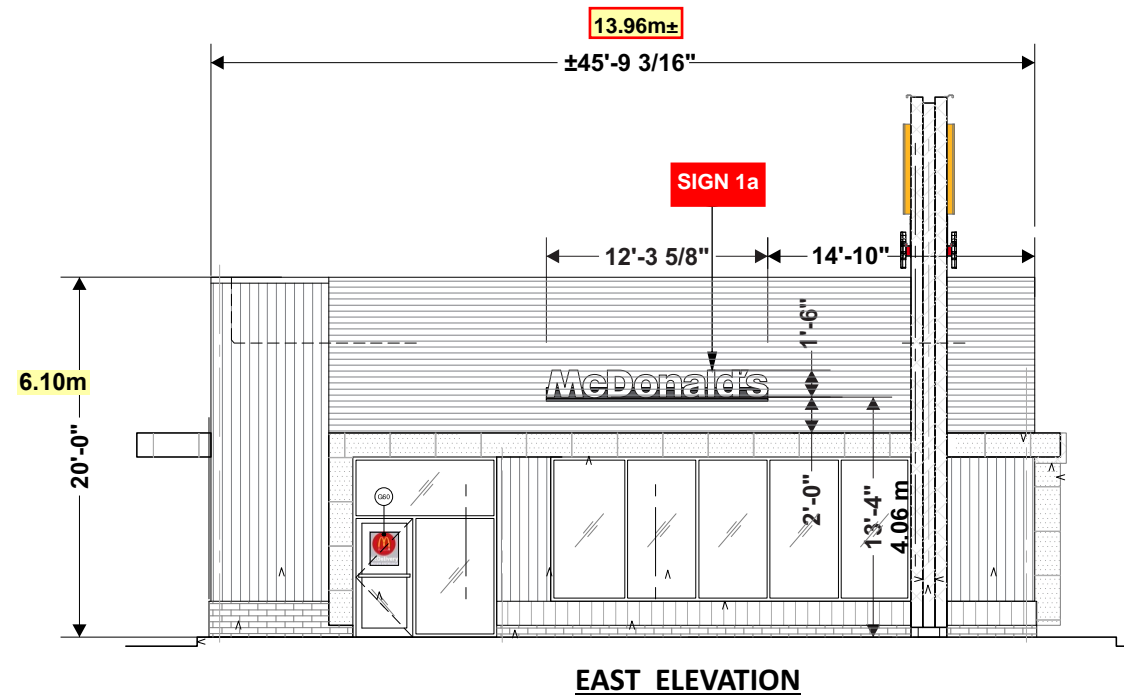
Pattison



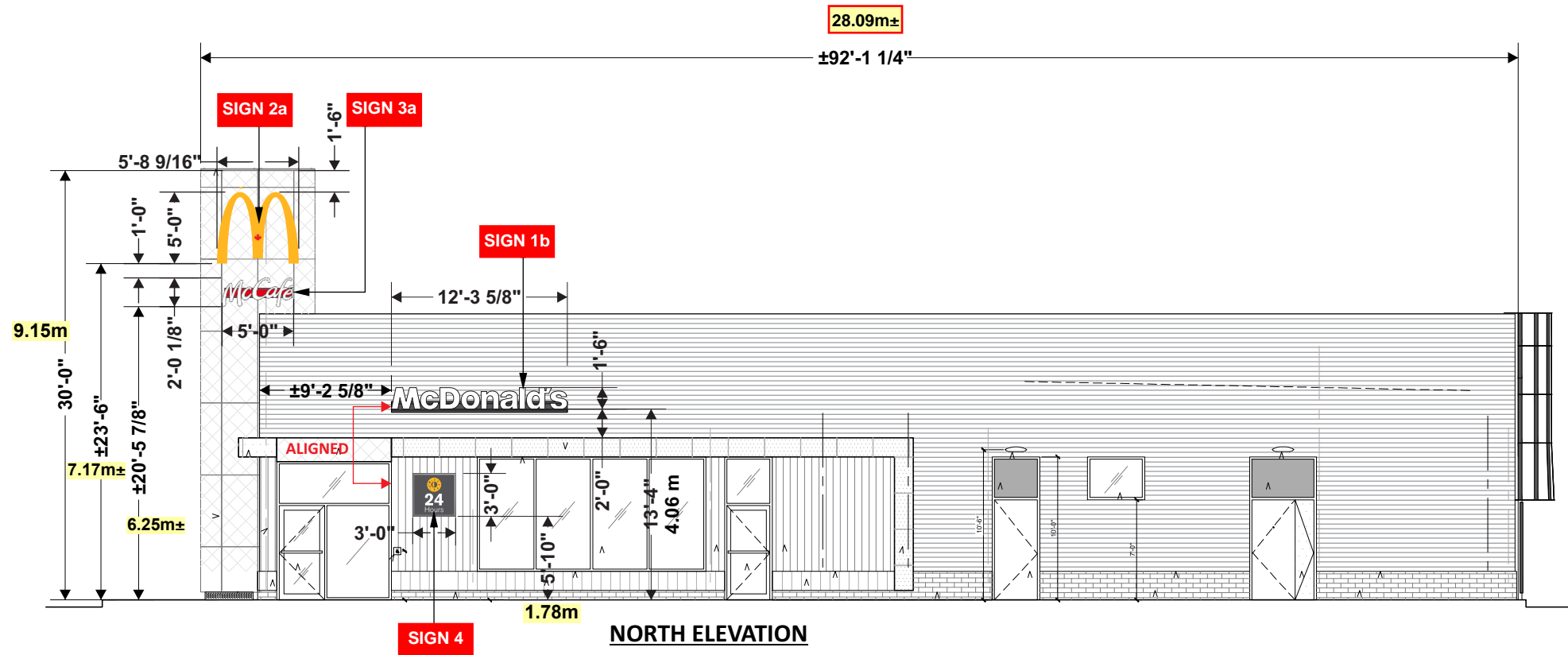
1.866.635.1110
pattisonid.com



NOTE: TECHNICAL SURVEY HAS NOT BEEN PERFORMED. DIMENSIONS MUST BE VERIFIED PRIOR TO PRODUCTION.



***REMOVED BRICK DECOR FROM BLADE -
BLADE EXTENSION IS ILLUSTRATIVE NO
REVISED ELEVATIONS PROVIDED***



Exterior Elevation	
#	Description
1.	18" Illuminated Channel Letters see MCD1C4D7146 Sign Area: 18.45 FT ² - 1.71 M ²
2.	60" Illuminated Arches Logo Sign See MCD1S4D7037 Sign Area: 29.05 FT ² - 2.69 M ²
3.	60" Illuminated McCafé Channel Letters on Raceway see MCD00CH4P30057 Sign Area: 10.05 FT ² - 0.93 M ²
4.	36" Illuminated S/F 24H Sign see MCD00SF4P30055 Sign Area: 9.00 FT ² - 0.84 M ²
* Blade by Pattison ID see Page 8	

Project ID AM6-94410C	
McDonald's # 41511 Hwy 26 & Grand Trunk Rd Stayner, ON	
Sign Item	
Date:	01-22-2025
Scale:	3/32"=1'-0"
Contact:	Aurela Michaud
Designer:	Claudia Vogt
Revision Note	
R1 (CV) - 04.07.2025	- added page
R2 (CV) - 05.05.2025	- added blade

**ADDITIONAL WALL SUPPORT/BACKING
BEHIND SIGN AREA SUPPLIED BY OTHERS**

**Information Required
for Production**

Text box

Customer Approval

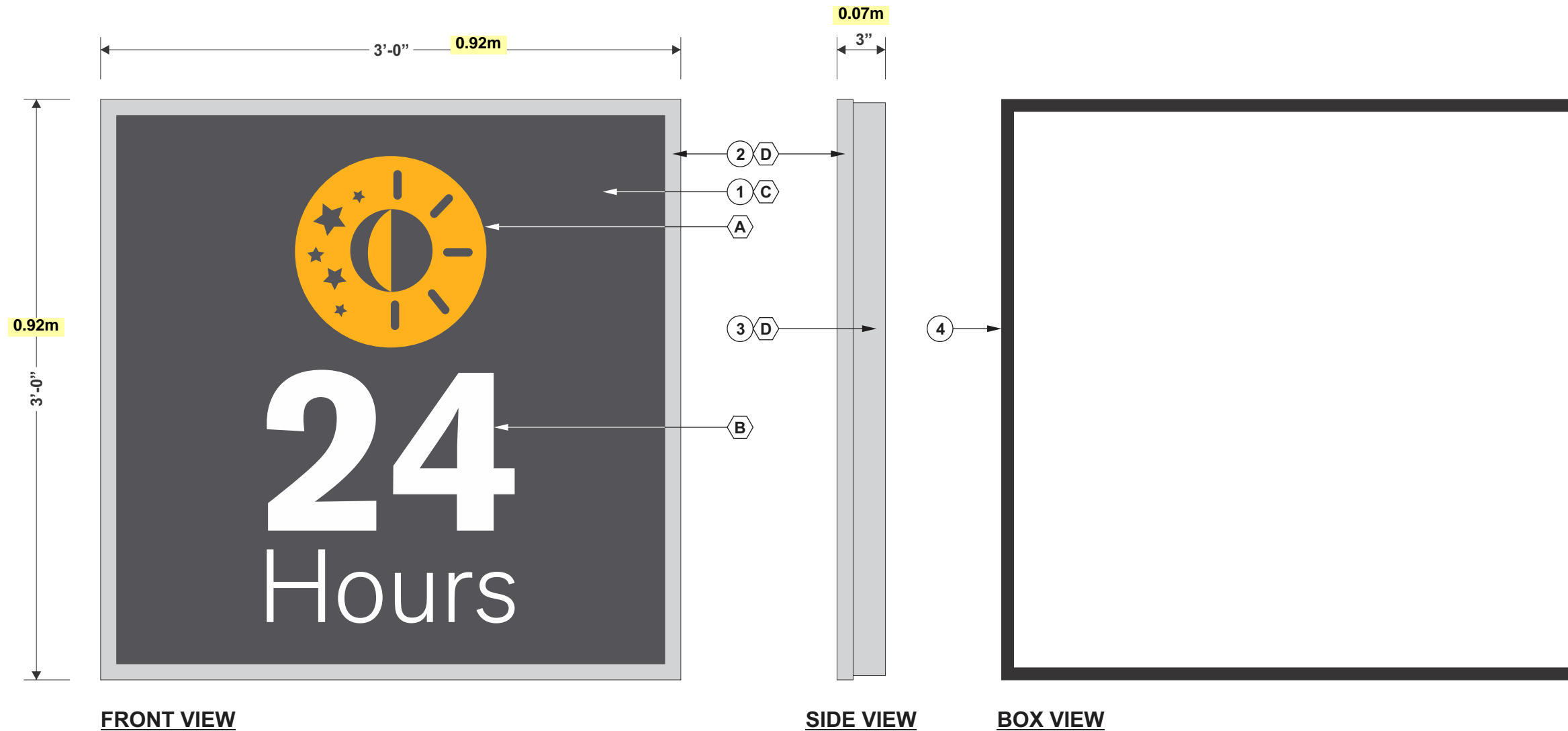
Signature _____
MM/DD/YYYY

All rights reserved. The artwork depicted herein are copyrighted and are the exclusive property of Pattison ID and as such cannot be reproduced and/or distributed, in whole or in part, without written permission of Pattison ID.

It is the Customer's responsibility to ensure that the sign installation location is suitable to accept and support the installation of the signs being ordered. Notify Pattison ID immediately if further details are required.

NOTE: TECHNICAL SURVEY HAS NOT BEEN PERFORMED. DIMENSIONS MUST BE VERIFIED PRIOR TO PRODUCTION.

SIGN 4 - S/F ILLUMINATED SIGNBOX FASCIA SIGN



MCDO0SF4P30055			
S/F ILLUMINATED SIGN			
Installation:	<input type="checkbox"/> Interior:	<input checked="" type="checkbox"/> Exterior:	
Electrical specifications:			
Volts:	120	Amp.:	0.65
		Circ.:	1
# Descriptions:			
1	3/16" TK. CLEAR ACRYLIC FACE WITH VINYL APPLIED ON SECOND SURFACE		
2	ALUMINUM ANGLE RETAINER		
3	ALUMINUM FABRICATED SIGNBOX		
4	WEATHERPROOF FOAM GASKET 1/8" TK. X 3/4" ALL AROUND SIGN BOX THEN INSTALL FACE & RETAINER		

Notes:
 1 SEE TECHNICAL DRAWING MCD1S3D70175 FOR MORE DETAIL

#	Colors:
A	YELLOW VINYL #3730-3762
B	WHITE VINYL #3630-20
C	GREY VINYL #7725-41
D	PAINTED TO MATCH SILVER COIL AT 70% GLOSS

SIGN AREA: 0.84m²

Customer Approval: _____ Date: ___/___/___

PRODUCTION INFORMATION : LF 04.22.2024	
FS\MCD00 (McDonald's)\Sign Box\3'-0" X 3'-0"\MCD00SF4P30055 24 Hours (3'-0" X 3'-0")	Descriptions: Plate #:
	PLASTIC/VINYL MCDO0SF4P30055-1
	ALUMINUM MCDO0SF4P30055-2
	XX XX
	XX XX
	XX XX
	XX XX
	XX XX

This sign is intended to be installed in accordance with the requirements of Article 600 of the National Electrical Code and Section 14 of the Canadian Electrical Code and other applicable local codes. This includes proper grounding and bonding of the sign.

Pattison Sign Group illuminated signs contain Fluorescent, Neon and/or HID Lamps. These lamps contain Mercury (Hg). Dispose of these lamps according to Local, Provincial, State, or Federal Laws.

IF THIS AGREEMENT INCLUDES THE MANUFACTURING AND INSTALLATION OF A BASE(S) BY PATTISON SIGN GROUP FOR THE SIGNS ORDERED HEREIN, SUCH BASE(S) SHALL BE BUILT AND INSTALLED IN ACCORDANCE WITH APPLICABLE LAWS AND REGULATIONS. IF A BASE(S) IS TO BE BUILT OR PROVIDED BY THE CUSTOMER (OR HIS AGENT), AND NOT BY PATTISON SIGN GROUP, THE CUSTOMER SHALL ENSURE THAT THE BASE(S) ARE BUILT AND INSTALLED IN ACCORDANCE WITH APPLICABLE LAWS AND REGULATIONS AND SHALL HOLD PATTISON SIGN GROUP HARMLESS AND INDEMNIFY AGAINST ANY AND ALL CLAIMS, LIABILITIES, ACTIONS, PENALTIES, FINES, AND ANY LEGAL FEES INCURRED BY PATTISON SIGN GROUP ARISING FROM THE FAILURE OF THE CUSTOMER (AND/OR IT'S AGENT) IN DOING SO.

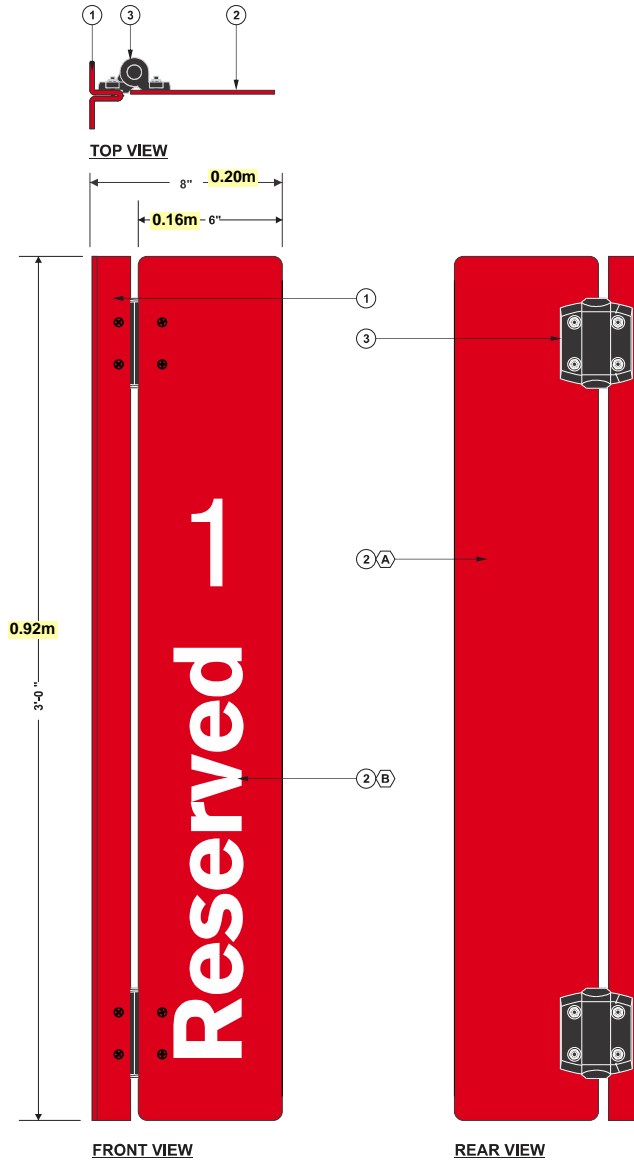
www.pattison.com



Tel: (506) 735-5506 | Fax: (877) 737-1734 | Toll Free: 1-800-561-9798

Client:	MCDONALD'S		
Site:	VARIOUS		
Draftsman:	NAZANIN ABEDIN	Date:	02.02.2024
Checked By:	CC		
Page:	1/3	Scale:	1 1/2" = 1'-0"

SIGN 7 - NON-ILLUMINATED ARTICULATED PROJECTING SIGN



MCD1S9KX014

ARTICULATED
WALL MOUNTED SIGN

Installation:	<input type="checkbox"/> Interior:	<input checked="" type="checkbox"/> Exterior:
Electrical specifications:		
Volts:	N/A	Amp.: N/A
Circ.:	N/A	
# Descriptions:		
1	4MM ACM BEND RED RON PANEL (ALAC0018)	
2	4MM ACM RED RON PANEL (ALAC0018) WITH VINYL APPLIED ON FIRST AND 2ND SURFACE	
3	SELF-CLOSING SPRING HINGE FROM (MCMASTER-CARR #2133A31)	

Notes:
1 SEE TECHNICAL DRAWING MCD1S9KX007S FOR MORE DETAIL

# Colors:	
A	RED VINYL #3630-2609 LAMINATED ON WHITE BLOCK-OUT #3635-20B (BACK ONLY)
B	WHITE VINYL #7725-20

# Revision(s)	By:	Date:
1	REVISED TO MATCH STD.	LL 11.06.2023

SIGN AREA: 0.14m²

Customer Approval: _____ Date: / /

PRODUCTION INFORMATION : XX		Descriptions:	Plate #:
XX		XX	XX
XX		XX	XX
XX		XX	XX
XX		XX	XX
XX		XX	XX
XX		XX	XX
XX		XX	XX
XX		XX	XX
XX		XX	XX
XX		XX	XX

www.pattison.com

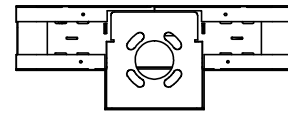
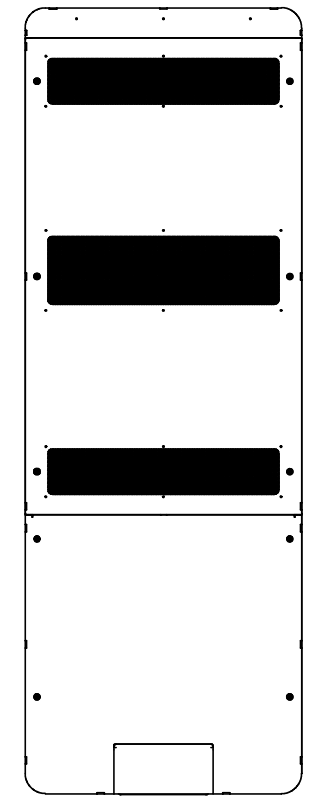
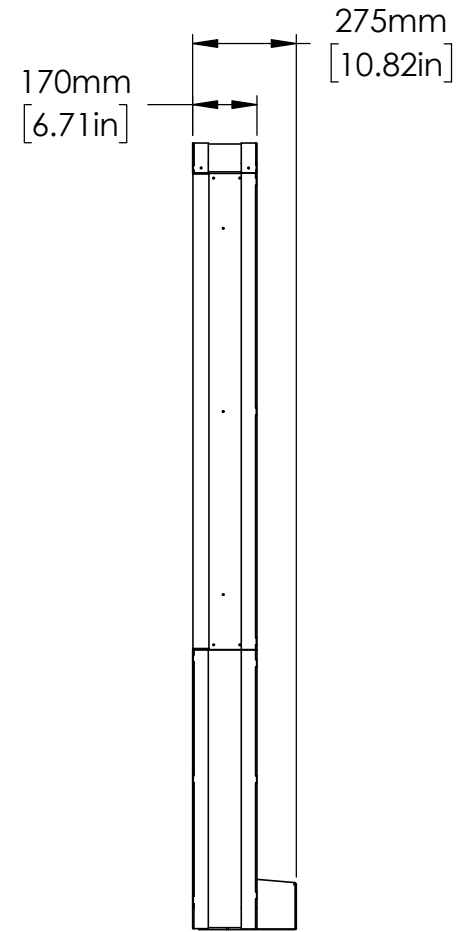
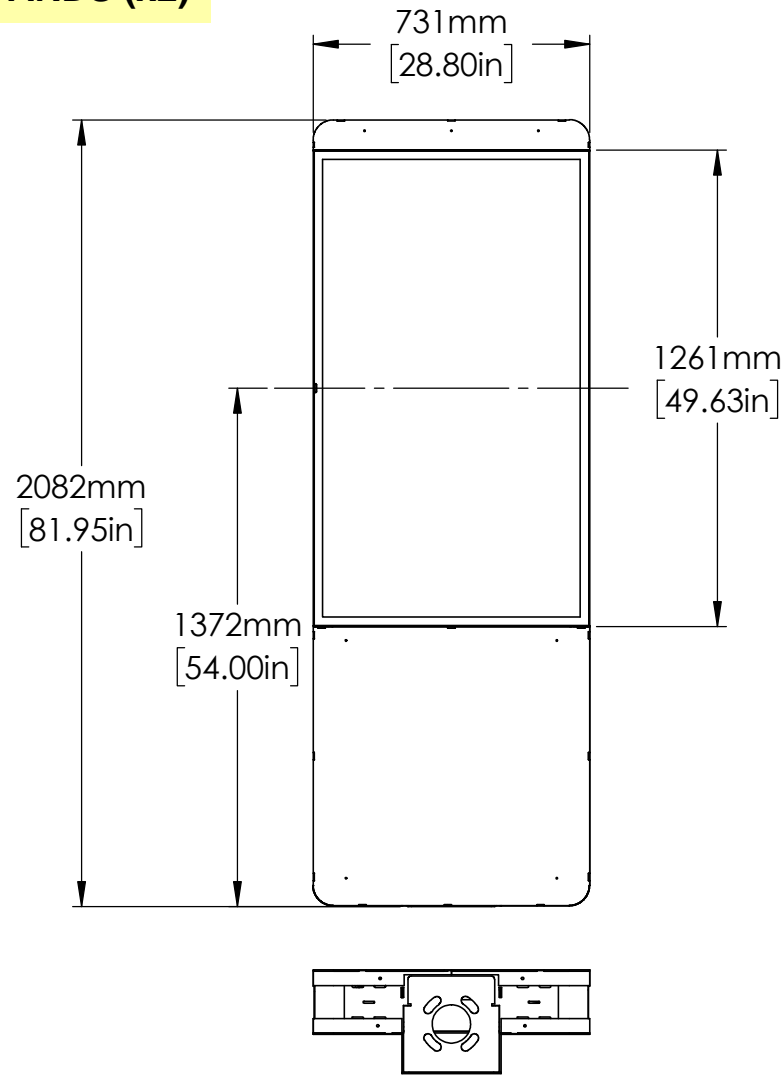
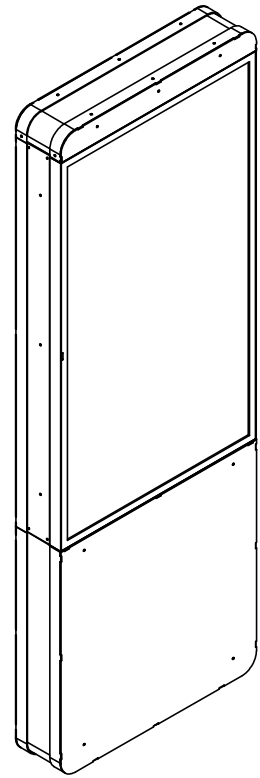
Pattison Sign Group

Tel: (506) 735-5506 | Fax: (877) 737-1734 | Toll Free: 1-800-561-9798

Client:	MCDONALD'S		
Site:	VARIOUS		
Draftsman:	LOUISE LANDRY	Date:	11.06.2023
Checked By:	CC		
Page:	1/1	Scale:	3" = 1'-0"

SIGN 10a & 10b - DIGITAL PRESELL BOARDS (x2)

x2



NOTES

1. STRUCTURAL DESIGN SCOPE INCLUDES METAL FRAME, FOUNDATION CONNECTION PLATE, AND ENCLOSURE ONLY - ANCHORAGE IS RESPONSIBILITY OF OTHERS.
2. FRAME HAS BEEN DESIGNED FOR THE FOLLOWING PARAMETERS IN ACCORDANCE WITH FIGURE I-24 IN THE STRUCTURAL COMMENTARY:
 $C_f = 1.1$
 $C_n = 1.0$
 $C_g = 2.0$
 $C_e = 0.9$
3. MENU BOARD STRUCTURE HAS BEEN QUALIFIED FOR INSTALLATION IN ALL ONTARIO LOCATIONS WITH $Q(1/50)$ LESS THAN 0.7kPA AS INDICATED IN THE CLIMATIC DATA IN OBC 2012.

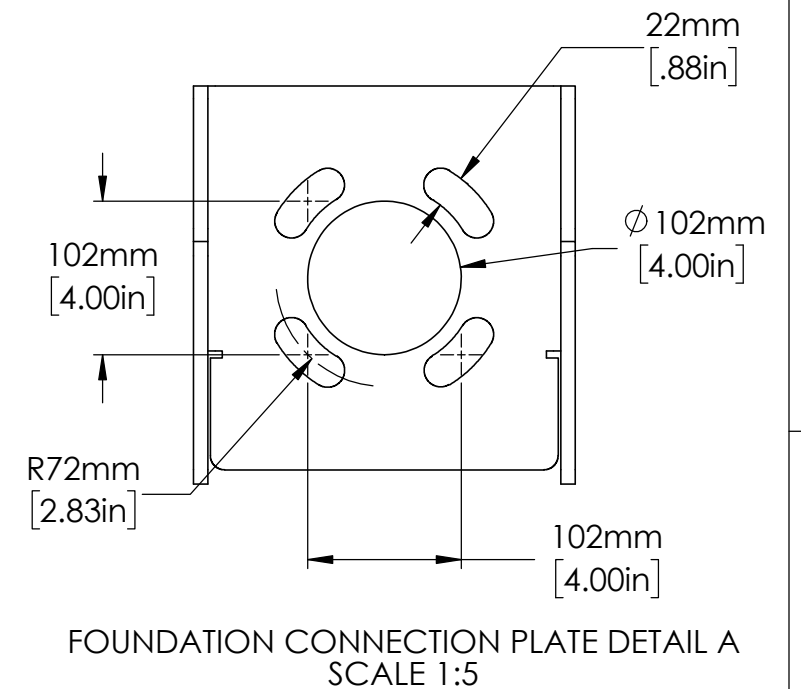
MATERIAL SPECIFICATIONS

1. INTERNAL FRAME MATERIALS: STEEL, POWDER COATED PANTONE PMS 425 (MATTE GREY)
2. EXTERNAL COVERS: ALUMINUM, POWDER COATED RAL9005 (MATTE BLACK)
3. EXTERNAL PERIMETER TRIM: ALUMINUM, POWDER COATED PANTONE PMS 425 (MATTE GREY)
4. DIGITAL DISPLAY EQUIPMENT: SAMSUNG OUTDOOR DISPLAY MODEL OHF/OHV

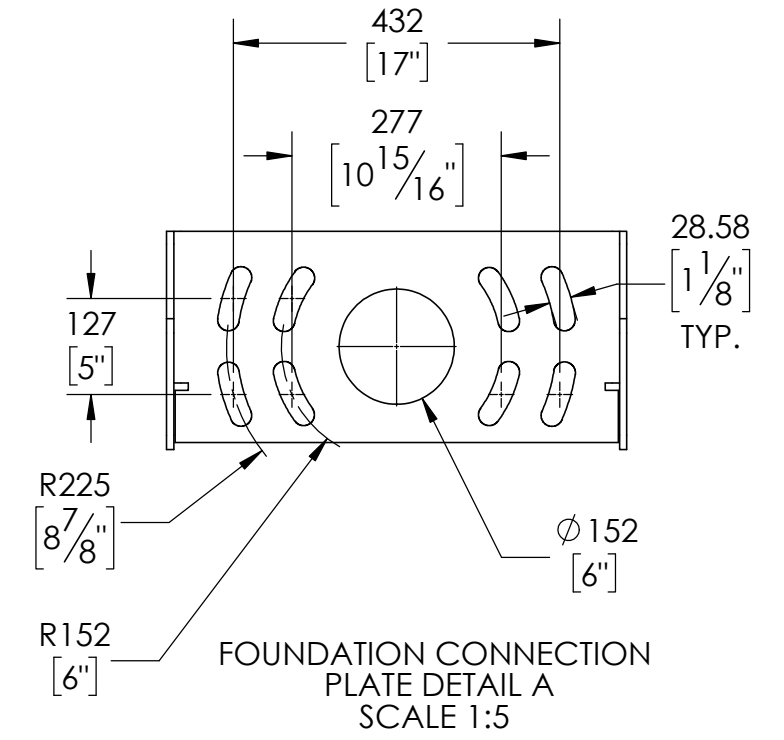
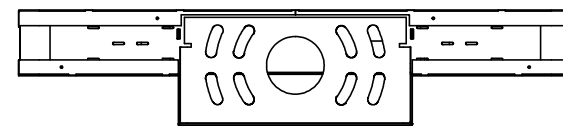
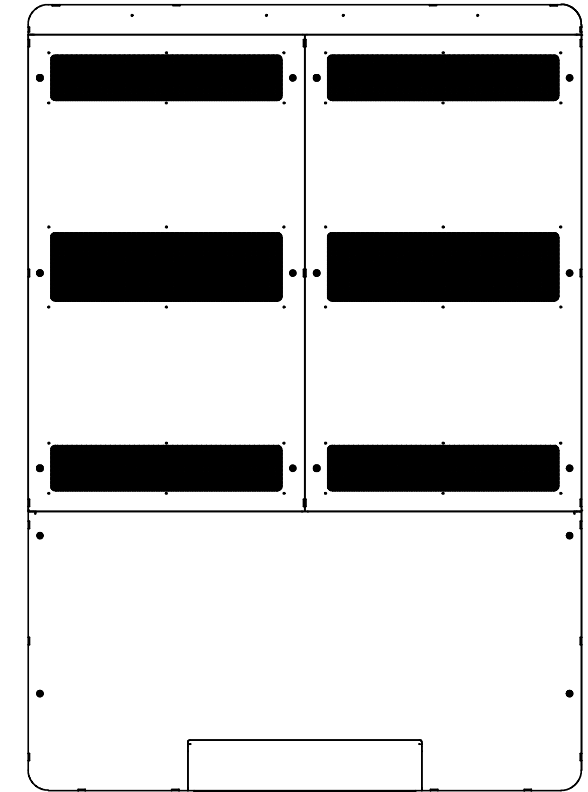
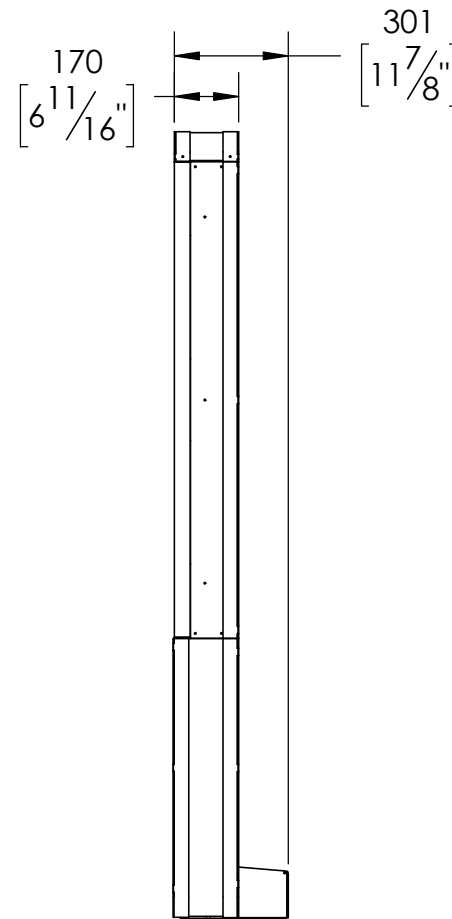
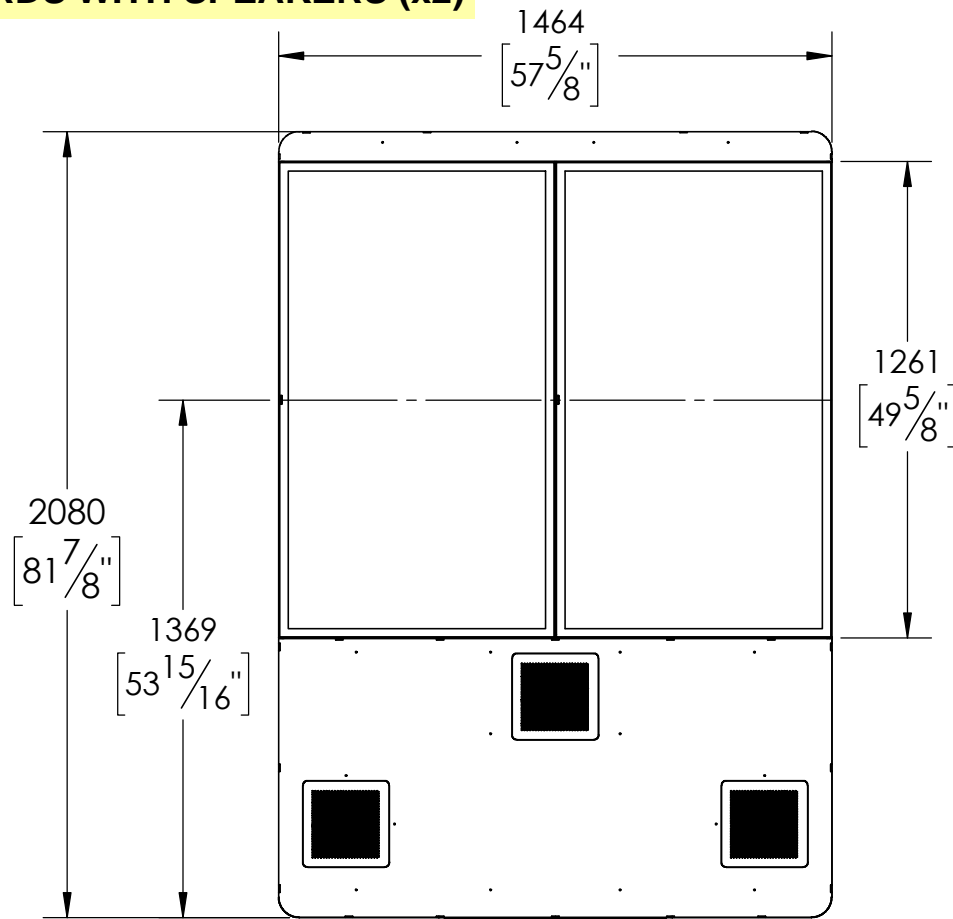
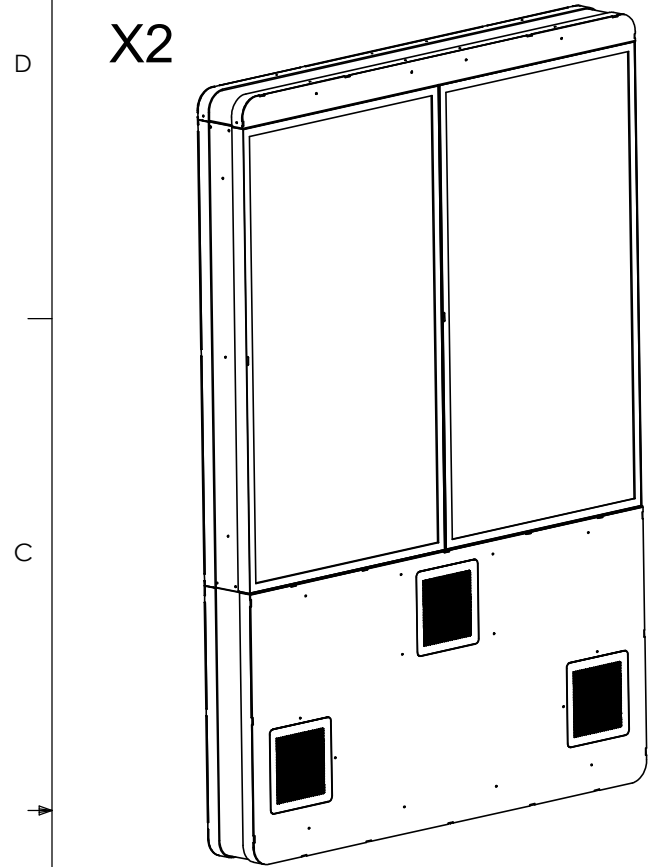
POWER & DATA REQUIREMENTS

1. POWER SUPPLY: 120V SINGLE PHASE 60 HZ 20A
2. DATA FEED: CAT6 SHIELDED CABLES WITH RJ45 TERMINATION

SIGN AREA: 1.52m²



SIGN 11a & 11b- DIGITAL MENU BOARDS WITH SPEAKERS (x2)



NOTES

- STRUCTURAL DESIGN SCOPE INCLUDES METAL FRAME, FOUNDATION CONNECTION PLATE, AND ENCLOSURE ONLY - ANCHORAGE IS RESPONSIBILITY OF OTHERS.
- FRAME HAS BEEN DESIGNED FOR THE FOLLOWING PARAMETERS IN ACCORDANCE WITH FIGURE I-24 IN THE STRUCTURAL COMMENTARY:
Cf = 1.1
Cn = 1.0
Cg = 2.0
Ce = 0.9
- MENU BOARD STRUCTURE HAS BEEN QUALIFIED FOR INSTALLATION IN ALL ONTARIO LOCATIONS WITH Q(1/50) LESS THAN 0.7KPA AS INDICATED IN THE CLIMATIC DATA IN OBC 2012.

MATERIAL SPECIFICATIONS

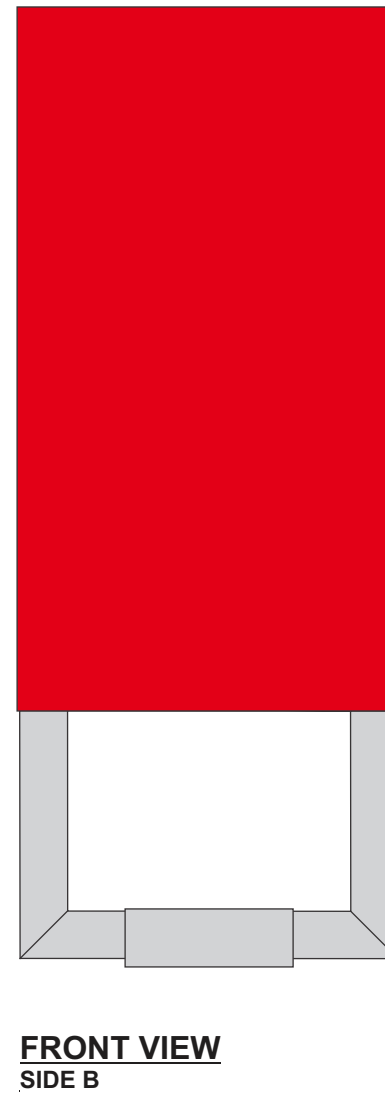
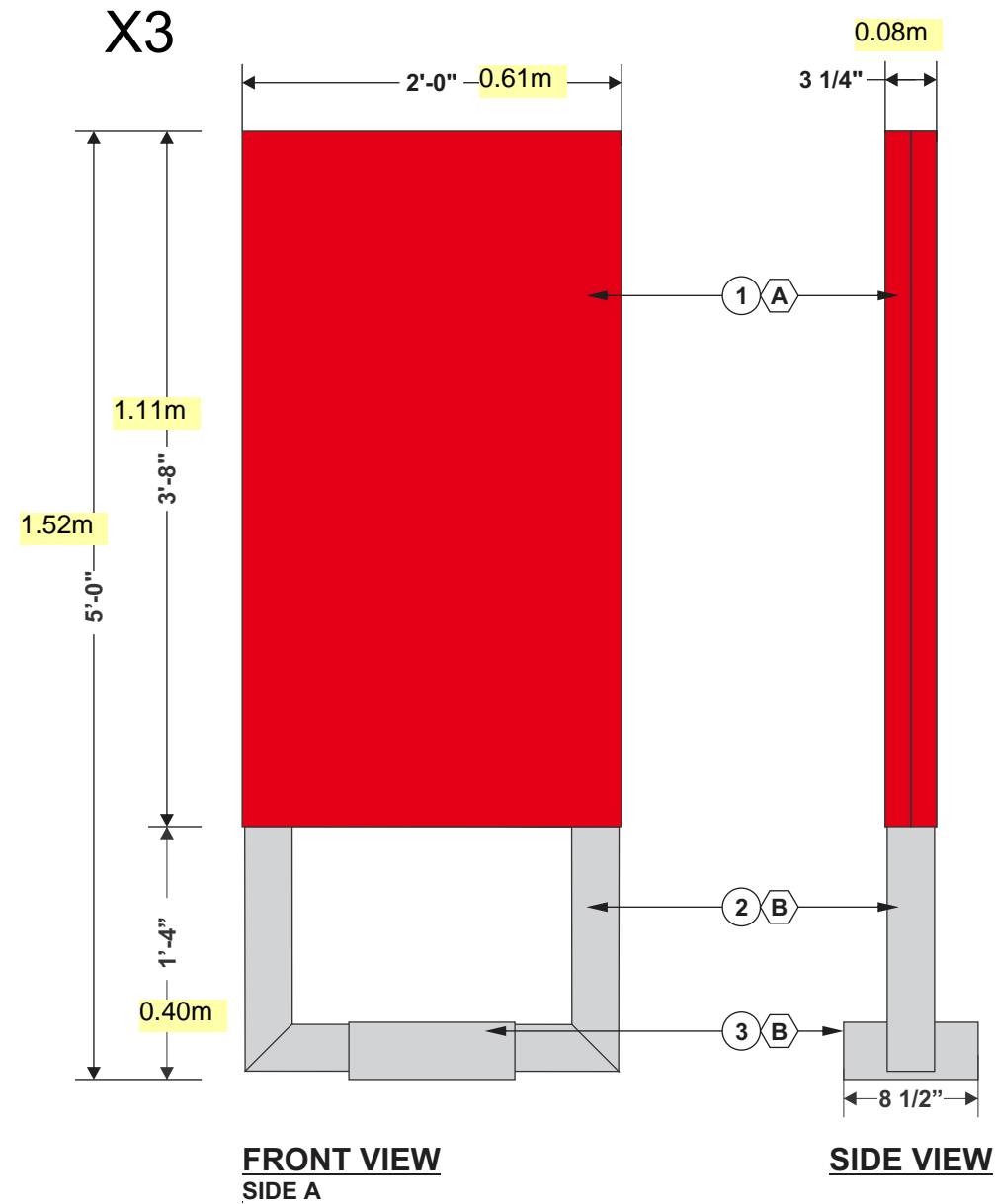
- INTERNAL FRAME MATERIALS: STEEL, POWDER COATED PANTONE PMS 425 (MATTE GREY)
- EXTERNAL COVERS: ALUMINUM, POWDER COATED RAL9005 (MATTE BLACK)
- EXTERNAL PERIMETER TRIM: ALUMINUM, POWDER COATED PANTONE PMS 425 (MATTE GREY)
- DIGITAL DISPLAY EQUIPMENT: SAMSUNG OUTDOOR DISPLAY MODEL OHF/OHV

POWER & DATA REQUIREMENTS

- POWER SUPPLY: 120V SINGLE PHASE 60 HZ 20A
- DATA FEED: 2X CAT6 SHIELDED CABLES WITH RJ45 TERMINATION

SIGN AREA: 3.09m²

SIGN 12a to 12c - D/F ILLUMINATED DIRECTIONAL SIGNS (x3)



MCDO0DR4B30003

D/F ILLUMINATED DIRECTIONAL SIGN

Installation: Interior: Exterior:

Electrical specifications:

Volts: 120 Amp.: 0.3 Circ.: 1

#	Descriptions:
1	ROUTED 1/8" TK. ALUMINUM FACE BACKED WITH 0.118" TK. SABIC POLYCARBONATE (SEE DRAWING MCDO0RFXAX0014 FOR GRAPHIC OPTION)
2	ALUMINUM TUBING
3	ALUMINUM BASE COVER

Notes:
 1 SEE TECHNICAL DRAWING FOR MORE DETAIL

#	Colors:
A	PAINTED TO MATCH RED VINYL #3630-2609
B	PAINTED TO MATCH SILVER COIL AT 70% GLOSS

#	Revision(s)	By:	Date:
1	ADD GRAPHICS OPTION PAGE 3 TO 7	AC	09.22.2016
2	REVISED POWER SUPPLY	LL	12.22.2022
3	REVISED TO MATCH STD.	LL	11.07.2023
4	REMOVED "DO NOT USE" FACES AND CREATE PDF "MCDO0DR4B30003-FACES"	CC	03.25.2024

SIGN AREA: 0.68m²

Customer Approval: _____ Date: ___/___/___

PRODUCTION INFORMATION : LF 01.09.2024	
FS\MCDO0 (McDonald's)\Directionnel\MCDO0DR4B30003 3'-8" X 2'-0"	Descriptions: Plate #:
	ALUMINUM MCD1E9B7020-1 &-2
	ALUMINUM MCDO0DR4B30003-1
	XX XX
	XX XX
	XX XX
	XX XX
	XX XX

www.pattisonsign.com



Tel: (506) 735-5506 | Fax: (877) 737-1734 | Toll Free: 1-800-561-9798

Client:	MC DONALD'S
Site:	VARIOUS
Draftsman:	ANNIE CARRIER
Date:	08.31.2016
Checked By:	JJ
Page:	1/2
Scale:	1" = 1'-0"

SIGN 16 - ILLUMINATED D/F PYLON



SIGNAREA: 39.06 FT² - 3.63 M²

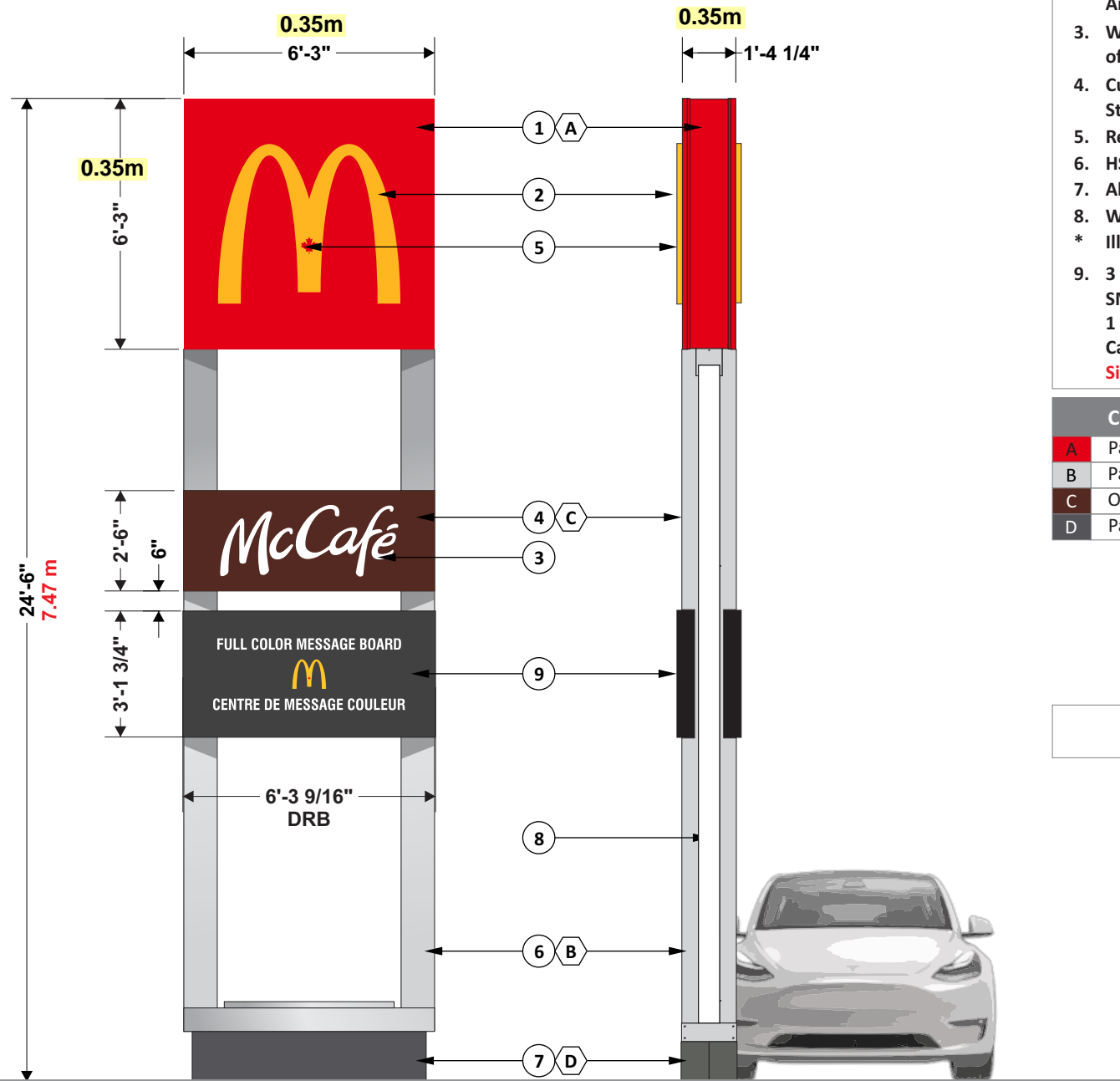


SIGNAREA: 15.63 FT² - 1.45 M²



SIGNAREA: 19.81 FT² - 1.84 M²

TOTAL SIGN AREA: 74.50 FT² - 6.92 M²



FRONT VIEW
24'-6" ROAD SIGN

SIDE VIEW

D/F Illuminated Road Sign

- | # | Description |
|----|---|
| 1. | Aluminum Sheet Sign Box with Aluminum Faces and internal Structure |
| 2. | Molded Sabic Yellow Polycarbonate Arches Logo |
| 3. | White Sabic Lexan Stud mounted to Back of Aluminum Face |
| 4. | Cut out Aluminum Face with internal Structure |
| 5. | Red Acrylic maple Leaf |
| 6. | HSS Post with Aluminum Sheet Decor |
| 7. | Aluminum Sheet Base Cover & Decor |
| 8. | White Sabic Lexan |
| * | Illuminated with White LED |
| 9. | 3 x 6 MCDO0DF4E30068 BRAVA Series SMD 6.67mm LED exterior Digital Display, 1 Primary and 1 Secondary Matrix 144 x 288 Cabinet Size: 3'-1 3/4" H x 6'-3 9/16" W
Sign Area: 19.81 FT² - 1.84 M² |

Colors:

A	Painted to match Red Vinyl 3M #3630-2609
B	Painted to match Silver Coil @ 70% gloss
C	Opaque Brown Paint to match PMS #4695
D	Painted PMS Cool Grey 11C

HEIGHT AND SIGN SIZE T.B.V.
USE OF DRB T.B.V.

Project ID
AM6-94410C

McDonald's # 41511
Hwy 26 & Grand Trunk Rd
Stayner, ON

Sign Item

Date: 01-22-2025
Scale: 3/32"=1'-0"
Contact: Aurelia Michaud
Designer: Claudia Vogt

Revision Note

Text box

Information Required for Production

Text box

Customer Approval

Signature

MM/DD/YYYY

All rights reserved. The artwork depicted herein are copyrighted and are the exclusive property of Pattison ID and as such cannot be reproduced and/or distributed, in whole or in part, without written permission of Pattison ID.

It is the Customer's responsibility to ensure that the sign installation location is suitable to accept and support the installation of the signs being ordered. Notify Pattison ID immediately if further details are required.

Pattison



1.866.635.1110
pattisonid.com

NOTE: TECHNICAL SURVEY HAS NOT BEEN PERFORMED. DIMENSIONS MUST BE VERIFIED PRIOR TO PRODUCTION.